

# *The Relational Model*

## Chapter 3



# *Why Study the Relational Model?*

- ❖ Most widely used model.
  - Vendors: IBM, Informix, Microsoft, Oracle, Sybase, etc.
- ❖ “Legacy systems” in older models
  - E.G., IBM’s IMS
- ❖ Recent competitor: object-oriented model
  - ObjectStore, Versant, Ontos
  - A synthesis emerging: *object-relational model*
    - ◆ Informix Universal Server, UniSQL, O2, Oracle, DB2



# *Relational Database: Definitions*

- ❖ *Relational database: a set of relations*
- ❖ *Relation: made up of 2 parts:*
  - *Instance : a table, with rows and columns.*  
*#Rows = cardinality, #fields = degree / arity.*
  - *Schema : specifies name of relation, plus name and type of each column.*
    - ◆ E.G. Students(*sid: string, name: string, login: string, age: integer, gpa: real*).
- ❖ *Can think of a relation as a set of rows or tuples (i.e., all rows are distinct).*



## *Example Instance of Students Relation*

sid	name	login	age	gpa
53666	Jones	jones@cs	18	3.4
53688	Smith	smith@eecs	18	3.2
53650	Smith	smith@math	19	3.8

- ❖ Cardinality = 3, degree = 5, all rows distinct
- ❖ Do all columns in a relation instance have to be distinct?



# *Relational Query Languages*

- ❖ A major strength of the relational model: supports simple, powerful *querying* of data.
- ❖ Queries can be written intuitively, and the DBMS is responsible for efficient evaluation.
  - The key: precise semantics for relational queries.
  - Allows the optimizer to extensively re-order operations, and still ensure that the answer does not change.



# *The SQL Query Language*

- ❖ Developed by IBM (system R) in the 1970s
- ❖ Need for a standard since it is used by many vendors
- ❖ Standards:
  - SQL-86
  - SQL-89 (minor revision)
  - SQL-92 (major revision, current standard)
  - SQL-99 (major extensions)

# *The SQL Query Language*

- ❖ To find all 18 year old students, we can write:

```
SELECT *  
FROM Students S  
WHERE S.age=18
```

sid	name	login	age	gpa
53666	Jones	jones@cs	18	3.4
53688	Smith	smith@ee	18	3.2

- To find just names and logins, replace the first line:

```
SELECT S.name, S.login
```

# Querying Multiple Relations

- ❖ What does the following query compute?

```
SELECT S.name, E.cid
FROM Students S, Enrolled E
WHERE S.sid=E.sid AND E.grade="A"
```

Given the following instance of Enrolled (is this possible if the DBMS ensures referential integrity?):

sid	cid	grade
53831	Carnatic101	C
53831	Reggae203	B
53650	Topology112	A
53666	History105	B

we get:

S.name	E.cid
Smith	Topology112





# *Creating Relations in SQL*

- ❖ Creates the Students relation. Observe that the type (domain) of each field is specified, and enforced by the DBMS whenever tuples are added or modified.
- ❖ As another example, the Enrolled table holds information about courses that students take.

```
CREATE TABLE Students  
  (sid: CHAR(20),  
   name: CHAR(20),  
   login: CHAR(10),  
   age: INTEGER,  
   gpa: REAL)
```

```
CREATE TABLE Enrolled  
  (sid: CHAR(20),  
   cid: CHAR(20),  
   grade: CHAR(2))
```



# *Destroying and Altering Relations*

DROP TABLE Students

- ❖ Destroys the relation Students. The schema information *and* the tuples are deleted.

ALTER TABLE Students

ADD COLUMN firstYear: integer

- ❖ The schema of Students is altered by adding a new field; every tuple in the current instance is extended with a *null* value in the new field.



# *Adding and Deleting Tuples*

- ❖ Can insert a single tuple using:

```
INSERT INTO Students (sid, name, login, age, gpa)
VALUES (53688, 'Smith', 'smith@ee', 18, 3.2)
```

- ❖ Can delete all tuples satisfying some condition (e.g., name = Smith):

```
DELETE
FROM Students S
WHERE S.name = 'Smith'
```

☞ *Powerful variants of these commands are available; more later!*



# *Integrity Constraints (ICs)*

- ❖ IC: condition that must be true for *any* instance of the database; e.g., *domain constraints*.
  - ICs are specified when schema is defined.
  - ICs are checked when relations are modified.
- ❖ A *legal* instance of a relation is one that satisfies all specified ICs.
  - DBMS should not allow illegal instances.
- ❖ If the DBMS checks ICs, stored data is more faithful to real-world meaning.
  - Avoids data entry errors, too!



# *Primary Key Constraints*

- ❖ A set of fields is a key for a relation if :
  1. No two distinct tuples can have same values in all key fields, and
  2. This is not true for any subset of the key.
    - Part 2 false? A *superkey*.
    - If there's >1 key for a relation, one of the keys is chosen (by DBA) to be the *primary key*.
- ❖ E.g., *sid* is a key for Students. (What about *name*?) The set {*sid*, *gpa*} is a superkey.

# Primary and Candidate Keys in SQL

❖ Possibly many candidate keys (specified using UNIQUE), one of which is chosen as the *primary key*.

❖ “For a given student and course, there is a single grade.” vs. “Students can take only one course, and receive a single grade for that course; further, no two students in a course receive the same grade.”

❖ Used carelessly, an IC can prevent the storage of database instances that arise in practice!

```
CREATE TABLE Enrolled
(sid CHAR(20)
 cid CHAR(20),
 grade CHAR(2),
 PRIMARY KEY (sid,cid) )
```

```
CREATE TABLE Enrolled
(sid CHAR(20)
 cid CHAR(20),
 grade CHAR(2),
 PRIMARY KEY (sid),
 UNIQUE (cid, grade) )
```



# *Foreign Keys, Referential Integrity*

- ❖ Foreign key: Set of fields in one relation that is used to `refer` to a tuple in another relation. (Must correspond to primary key of the second relation.) Like a `logical pointer`.
- ❖ E.g. *sid* is a foreign key referring to Students:
  - Enrolled(*sid*: string, *cid*: string, *grade*: string)
  - If all foreign key constraints are enforced, referential integrity is achieved, i.e., no dangling references.
  - Can you name a data model w/o referential integrity?
    - ◆ Links in HTML!

# Foreign Keys in SQL

- ❖ Only students listed in the Students relation should be allowed to enroll for courses.

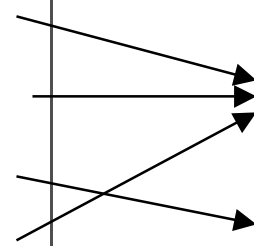
```
CREATE TABLE Enrolled
  (sid CHAR(20), cid CHAR(20), grade CHAR(2),
   PRIMARY KEY (sid,cid),
   FOREIGN KEY (sid) REFERENCES Students )
```

Enrolled

sid	cid	grade
53666	Carnatic101	C
53666	Reggae203	B
53650	Topology112	A
53666	History105	B

Students

sid	name	login	age	gpa
53666	Jones	jones@cs	18	3.4
53688	Smith	smith@eecs	18	3.2
53650	Smith	smith@math	19	3.8







# *Enforcing Referential Integrity*

- ❖ Consider Students and Enrolled; *sid* in Enrolled is a foreign key that references Students.
- ❖ What should be done if an Enrolled tuple with a non-existent student id is inserted? (*Reject it!*)
- ❖ What should be done if a Students tuple is deleted?
  - Also delete all Enrolled tuples that refer to it.
  - Disallow deletion of a Students tuple that is referred to.
  - Set *sid* in Enrolled tuples that refer to it to a *default sid*.
  - (In SQL, also: Set *sid* in Enrolled tuples that refer to it to a special value *null*, denoting ‘*unknown*’ or ‘*inapplicable*’.)
- ❖ Similar if primary key of Students tuple is updated.



# *Referential Integrity in SQL/92*

- ❖ SQL/92 supports all 4 options on deletes and updates.
  - Default is NO ACTION (*delete/update is rejected*)
  - CASCADE (also delete all tuples that refer to deleted tuple)
  - SET NULL / SET DEFAULT (sets foreign key value of referencing tuple)

```
CREATE TABLE Enrolled
(sid CHAR(20),
cid CHAR(20),
grade CHAR(2),
PRIMARY KEY (sid,cid),
FOREIGN KEY (sid)
REFERENCES Students
ON DELETE CASCADE
ON UPDATE SET DEFAULT )
```



## *Where do ICs Come From?*

- ❖ ICs are based upon the semantics of the real-world enterprise that is being described in the database relations.
- ❖ We can check a database instance to see if an IC is violated, but we can NEVER infer that an IC is true by looking at an instance.
  - An IC is a statement about *all possible* instances!
  - From example, we know *name* is not a key, but the assertion that *sid* is a key is given to us.
- ❖ Key and foreign key ICs are the most common; more general ICs supported too.

# Views

- ❖ A view is just a relation, but we store a *definition*, rather than a set of tuples.

```
CREATE VIEW YoungActiveStudents (name, grade)
AS SELECT S.name, E.grade
FROM Students S, Enrolled E
WHERE S.sid = E.sid and S.age < 21
```

- ❖ Views can be dropped using the DROP VIEW command.
  - ◆ How to handle DROP TABLE if there's a view on the table?
    - DROP TABLE command has options to let the user specify this.

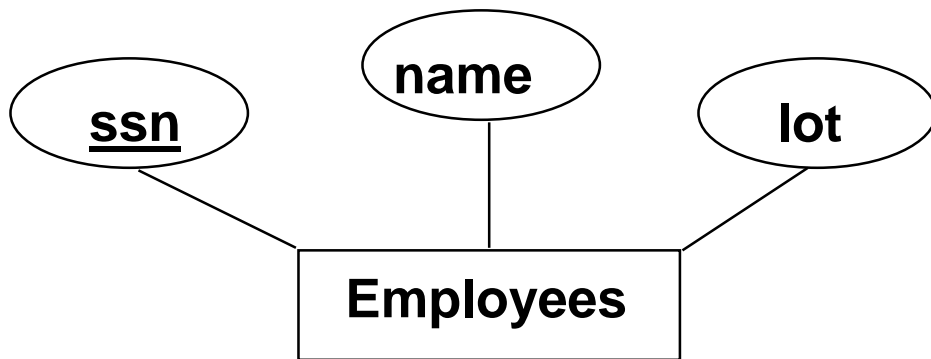


# *Views and Security*

- ❖ Views can be used to present necessary information (or a summary), while hiding details in underlying relation(s).
  - Given YoungStudents, but not Students or Enrolled, we can find students *s* who have are enrolled, but not the *cid*'s of the courses they are enrolled in.

# Logical DB Design: ER to Relational

- ❖ Entity sets to tables.



```
CREATE TABLE Employees  
  (ssn CHAR(11),  
   name CHAR(20),  
   lot INTEGER,  
   PRIMARY KEY (ssn))
```



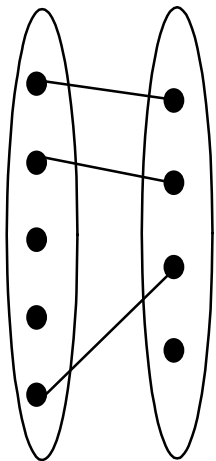
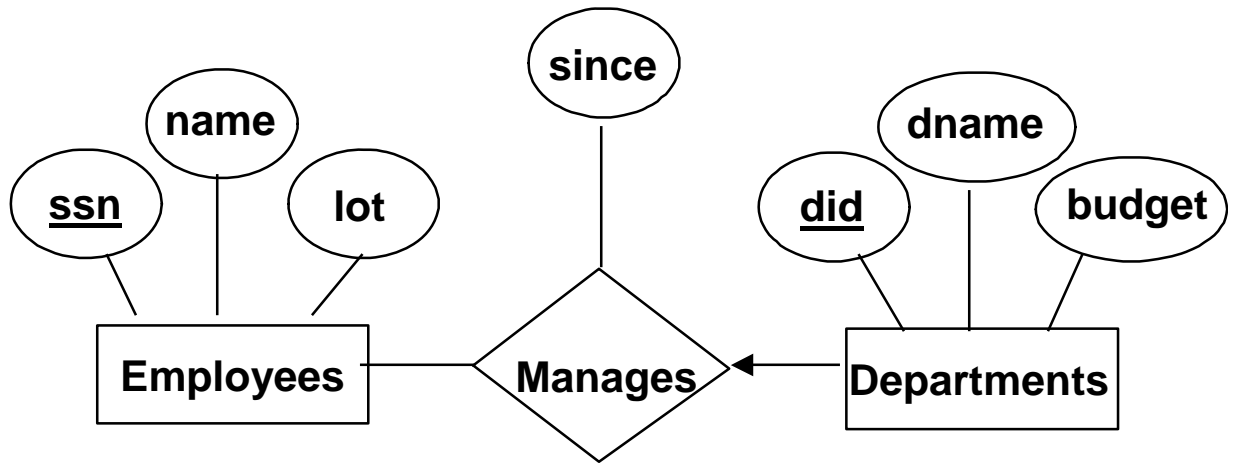
# *Relationship Sets to Tables*

- ❖ In translating a relationship set to a relation, attributes of the relation must include:
  - Keys for each participating entity set (as foreign keys).
    - ◆ This set of attributes forms a *superkey* for the relation.
  - All descriptive attributes.

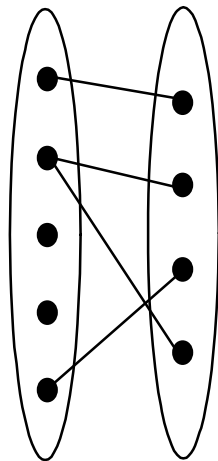
```
CREATE TABLE Works_In(  
    ssn CHAR(1),  
    did INTEGER,  
    since DATE,  
    PRIMARY KEY (ssn, did),  
    FOREIGN KEY (ssn)  
        REFERENCES Employees,  
    FOREIGN KEY (did)  
        REFERENCES Departments)
```

# Review: Key Constraints

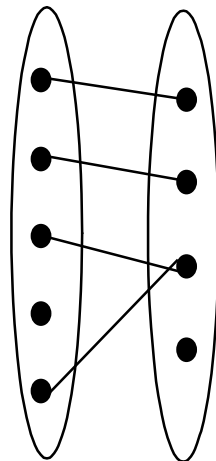
- ❖ Each dept has at most one manager, according to the key constraint on **Manages**.



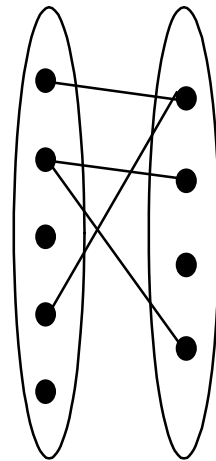
1-to-1



1-to Many



Many-to-1



Many-to-Many

*Translation to relational model?*



# Translating ER Diagrams with Key Constraints

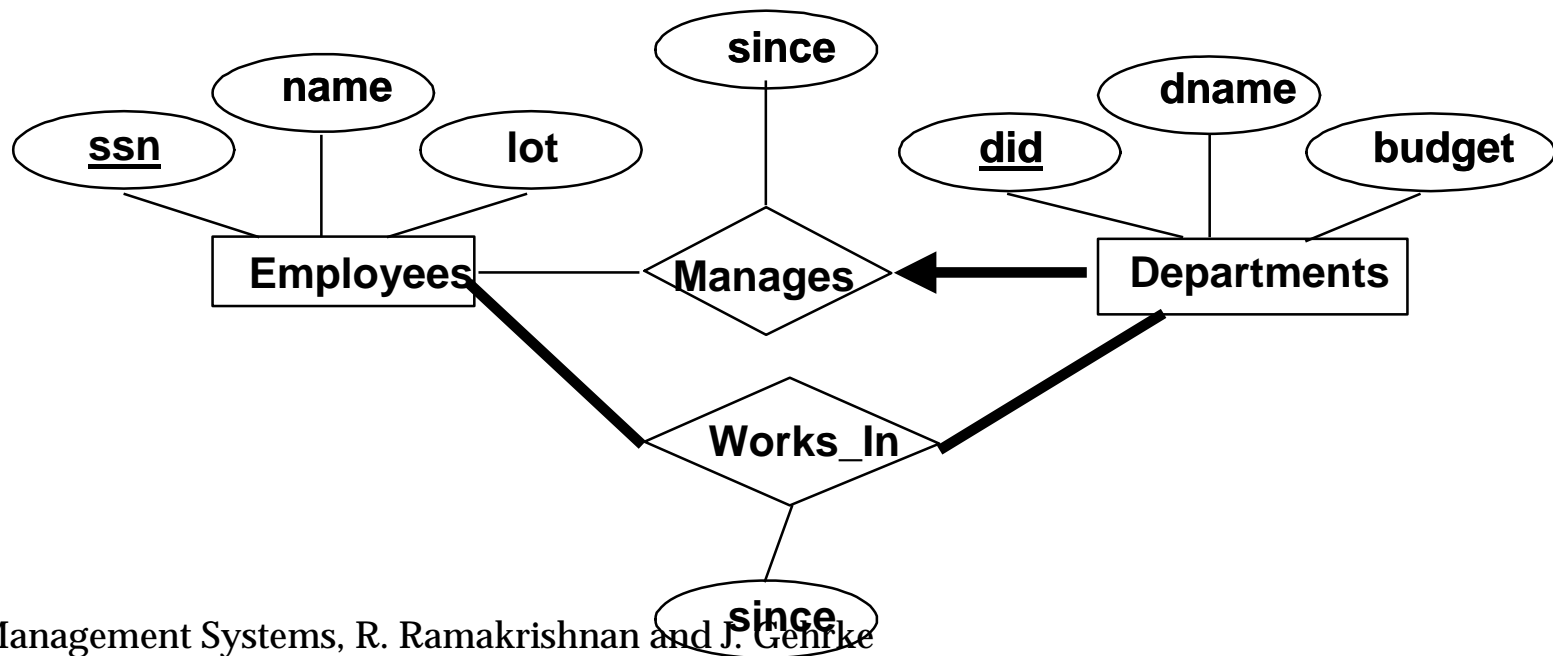
- ❖ Map relationship to a table:
  - Note that did is the key now!
  - Separate tables for Employees and Departments.
- ❖ Since each department has a unique manager, we could instead combine Manages and Departments.

```
CREATE TABLE Manages(  
  ssn CHAR(11),  
  did INTEGER,  
  since DATE,  
  PRIMARY KEY (did),  
  FOREIGN KEY (ssn) REFERENCES Employees,  
  FOREIGN KEY (did) REFERENCES Departments)
```

```
CREATE TABLE Dept_Mgr(  
  did INTEGER,  
  dname CHAR(20),  
  budget REAL,  
  ssn CHAR(11),  
  since DATE,  
  PRIMARY KEY (did),  
  FOREIGN KEY (ssn) REFERENCES Employees)
```

# Review: Participation Constraints

- ❖ Does every department have a manager?
  - If so, this is a participation constraint: the participation of Departments in Manages is said to be *total* (vs. *partial*).
    - ◆ Every *did* value in Departments table must appear in a row of the Manages table (with a non-null *ssn* value!)



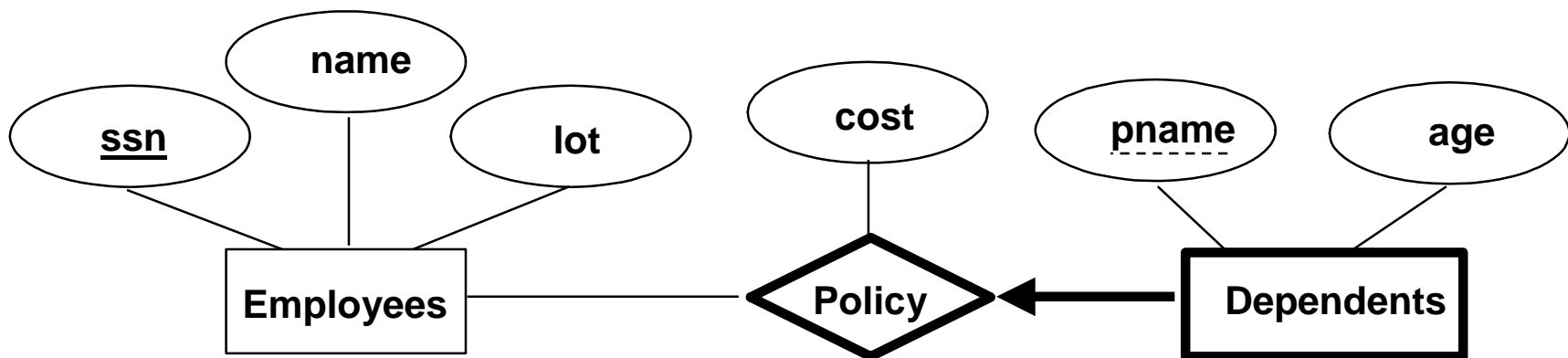
# *Participation Constraints in SQL*

- ❖ We can capture participation constraints involving one entity set in a binary relationship, but little else (without resorting to CHECK constraints).

```
CREATE TABLE Dept_Mgr(  
  did INTEGER,  
  dname CHAR(20),  
  budget REAL,  
  ssn CHAR(11) NOT NULL,  
  since DATE,  
  PRIMARY KEY (did),  
  FOREIGN KEY (ssn) REFERENCES Employees,  
  ON DELETE NO ACTION)
```

# Review: Weak Entities

- ❖ A *weak entity* can be identified uniquely only by considering the primary key of another (*owner*) entity.
  - Owner entity set and weak entity set must participate in a one-to-many relationship set (1 owner, many weak entities).
  - Weak entity set must have total participation in this *identifying* relationship set.

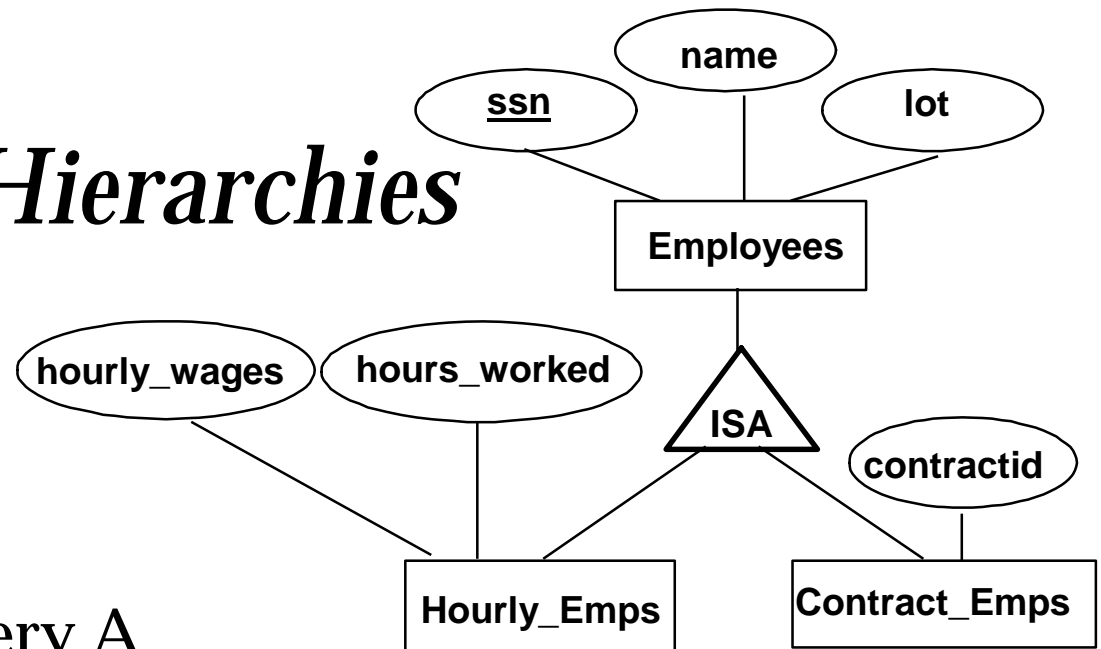


# *Translating Weak Entity Sets*

- ❖ Weak entity set and identifying relationship set are translated into a single table.
  - When the owner entity is deleted, all owned weak entities must also be deleted.

```
CREATE TABLE Dep_Policy (  
    pname CHAR(20),  
    age INTEGER,  
    cost REAL,  
    ssn CHAR(11) NOT NULL,  
    PRIMARY KEY (pname, ssn),  
    FOREIGN KEY (ssn) REFERENCES Employees,  
    ON DELETE CASCADE)
```

# Review: ISA Hierarchies



❖ As in C++, or other PLs, attributes are inherited.

❖ If we declare A ISA B, every A entity is also considered to be a B entity.

- ❖ *Overlap constraints:* Can Joe be an Hourly\_Emps as well as a Contract\_Emps entity? (Allowed/disallowed)
- ❖ *Covering constraints:* Does every Employees entity also have to be an Hourly\_Emps or a Contract\_Emps entity? (Yes/no)

# Translating ISA Hierarchies to Relations

## ❖ **General approach:**

- 3 relations: Employees, Hourly\_Emps and Contract\_Emps.
  - ◆ *Hourly\_Emps*: Every employee is recorded in Employees. For hourly emps, extra info recorded in Hourly\_Emps (*hourly\_wages*, *hours\_worked*, *ssn*); must delete Hourly\_Emps tuple if referenced Employees tuple is deleted).
  - ◆ Queries involving all employees easy, those involving just Hourly\_Emps require a join to get some attributes.

## ❖ **Alternative: Just Hourly\_Emps and Contract\_Emps.**

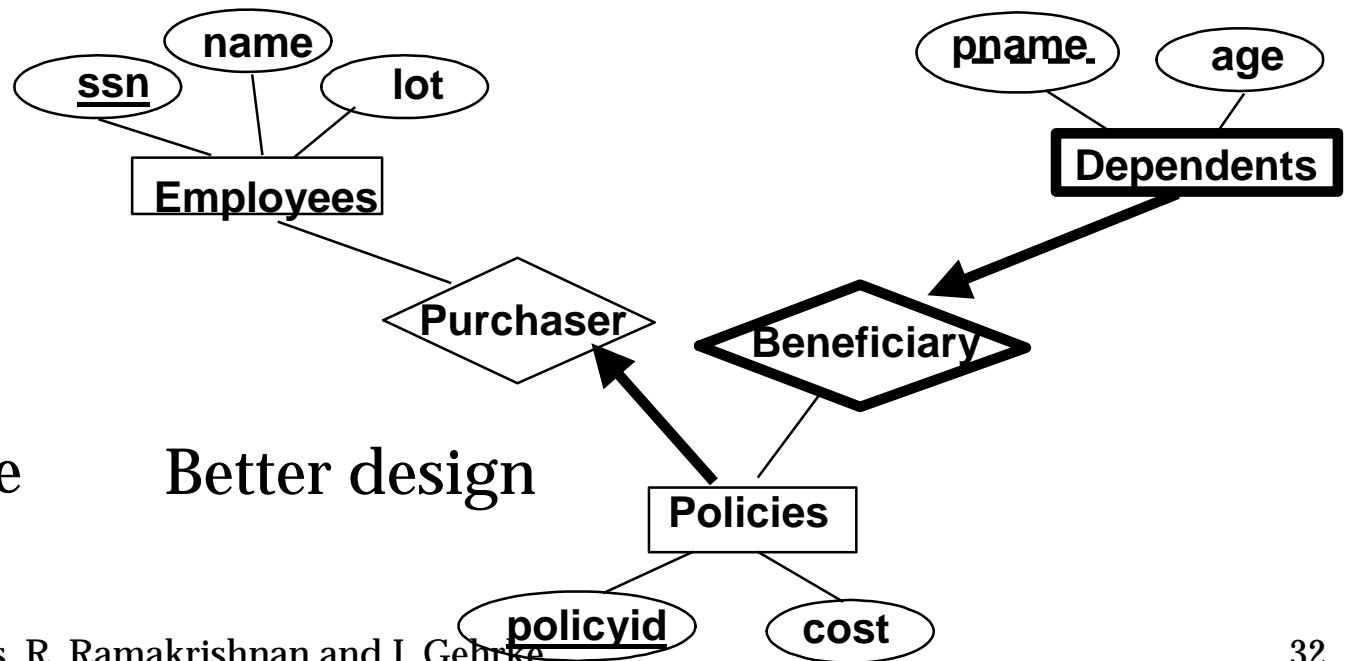
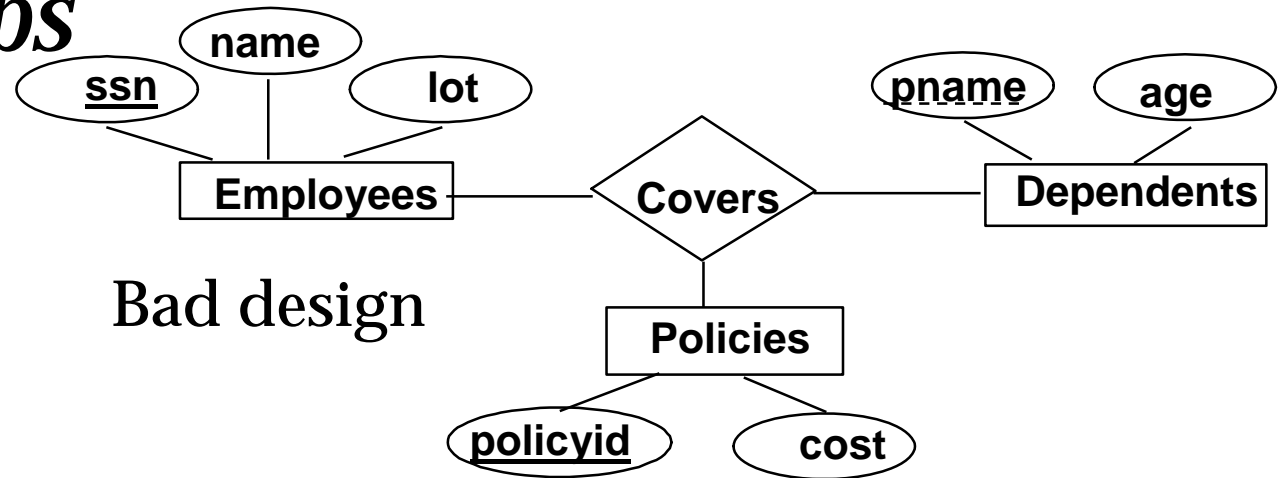
- *Hourly\_Emps*: *ssn*, *name*, *lot*, *hourly\_wages*, *hours\_worked*.
- Each employee must be in one of these two subclasses.

# Review: Binary vs. Ternary Relationships

- ❖ If each policy is owned by just 1 employee:

- Key constraint on Policies would mean policy can only cover 1 dependent!

- ❖ What are the additional constraints in the 2nd diagram?







## *Binary vs. Ternary Relationships (Contd.)*

- ❖ The key constraints allow us to combine Purchaser with Policies and Beneficiary with Dependents.

```
CREATE TABLE Policies (  
  policyid INTEGER,  
  cost REAL,  
  ssn CHAR(11) NOT NULL,  
  PRIMARY KEY (policyid).  
  FOREIGN KEY (ssn) REFERENCES Employees,  
  ON DELETE CASCADE)
```

- ❖ Participation constraints lead to NOT NULL constraints.

```
CREATE TABLE Dependents (  
  pname CHAR(20),  
  age INTEGER,  
  policyid INTEGER,  
  PRIMARY KEY (pname, policyid).  
  FOREIGN KEY (policyid) REFERENCES Policies,  
  ON DELETE CASCADE)
```

- ❖ What if Policies is a weak entity set?



# *Relational Model: Summary*

- ❖ A tabular representation of data.
- ❖ Simple and intuitive, currently the most widely used.
- ❖ Integrity constraints can be specified by the DBA, based on application semantics. DBMS checks for violations.
  - Two important ICs: primary and foreign keys
  - In addition, we *always* have domain constraints.
- ❖ Powerful and natural query languages exist.
- ❖ Rules to translate ER to relational model