

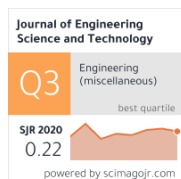
# Journal of Engineering Science and Technology (JESTEC)

[Home](#)
[Editorial Board](#)
[Submit a paper](#)
[Indexing and Awards](#)
[Reviewers](#)
[Articles in Press](#)
[Publication Ethics](#)
[Archives](#)

**JESTEC**  
Journal of Engineering  
Science and Technology



WEB OF SCIENCE



## Editor-in-Chief

**Ir Dr Siva Kumar Sivanesan**  
Taylor's University, Malaysia

## Deputy Editor-in-Chief

**Dr Se Yong Eh Noum**  
Taylor's University, Malaysia

## Executive Editor

**Assoc Prof Dr Abdulkareem Sh. Mahdi Al-Obaidi**  
Taylor's University, Malaysia

Journal of Engineering Science and Technology (JESTEC) is indexed by [SCOPUS](#) since 2010.

Journal of Engineering Science and Technology has been selected for coverage in [Clarivate Analytics products and services](#).

Beginning with 2016, this publication will be indexed and abstracted in:

[Emerging Sources Citation Index \(ESCI\)](#)

**ISSN: 1823-4690**

## Aims and Scope

### Aims & Scope

JESTEC (Journal of Engineering Science and Technology) is a peer-reviewed journal that aims to publish and disseminate original research articles on the latest developments in all fields of engineering science and technology. The journal publishes original papers in English, which contribute to understanding engineering science and improving engineering technology and education. The articles may be theoretical (including computational), experimental or both. The contribution should be unpublished before and not under consideration for publication elsewhere.

JESTEC maintains a standard double-blind peer-review process. The double-blind process means that the author and the reviewer's identity are not known to each other.

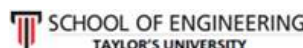
JESTEC is an Open Access journal and does not charge readers or their institutions to access the journal articles. Open access supports users' rights to read, download, copy, distribute, print, search, or link to these articles' full texts, provided they are properly acknowledged and cited.

JESTEC publishes six issues per year.

The publication fees in JESTEC include submission, reviewing, editing, publishing, and uploading the accepted article to the JESTEC website. For all these services, JESTEC charges USD375 or MYR1550 per paper (inclusive 6% SST). The number of pages per paper should be a minimum of 8 pages and a maximum of 15-18 pages.

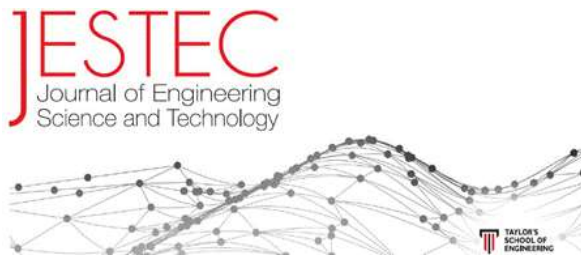
## Subscriptions and enquiries

Contact the [Executive Editor](#)

[Home](#)
[Editorial Board](#)
[Submit a paper](#)
[Indexing and Awards](#)
[Reviewers](#)
[Articles in Press](#)
[Publication Ethics](#)
[Archives](#)


Copyright ©2006-2021 by: School of Engineering, Taylor's University

## Journal of Engineering Science and Technology (JESTEC)



### Editorial Board

[Home](#)

[Editorial Board](#)

[Submit a paper](#)

[Indexing and Awards](#)

[Reviewers](#)

[Articles in Press](#)

[Publication Ethics](#)

[Archives](#)

#### ***Editor-In-Chief***

▪ **Abdulkareem Shafiq Mahdi Al-Obaidi**, Ph.D.  
Associate Professor, School of Computer Science and Engineering  
Faculty of Innovation and Technology  
Taylor's University  
Taylor's Lakeside Campus  
No. 1 Jalan Taylor's, 47500 Subang Jaya  
Selangor DE  
Malaysia

#### ***Deputy Editor-in-Chief***

▪ **Se Yong Eh Noum**, Ph.D.  
School of Computer Science and Engineering  
Faculty of Innovation and Technology  
Taylor's University  
Taylor's Lakeside Campus  
No. 1 Jalan Taylor's, 47500 Subang Jaya  
Selangor DE  
Malaysia

#### ***Editors***

▪ **G. Davies**, Ph.D.  
Professor, Dean, Faculty School of Engineering  
The University of New South Wales  
UNSW Sydney  
NSW 2052  
Australia

▪ **Rodney Chaplin**, Ph.D.  
Associate, Professor, Associate Dean (International)  
Faculty of Engineering  
The University of New South Wales  
UNSW Sydney  
NSW 2052  
Australia

▪ **Andrew Ooi**, Ph.D.  
Associate, Professor, Assistant Dean (International)  
School of Engineering  
The University of Melbourne  
Victoria 3010  
Australia

▪ **David WL Hukins**, Ph.D.  
B.Sc., Ph.D. (London), D.Sc. (Manchester), C.Phys., F.Inst.P., F.I.P.E.M., F.R.S.E.  
Professor of Bio-medical Engineering  
Head of Mechanical and Manufacturing Engineering  
School of Engineering  
Mechanical Engineering  
The University of Birmingham  
Edgbaston  
Birmingham  
B15 2TT  
United Kingdom

▪ **Takayuki Saito**, Ph.D.  
Professor, Shizuoka University  
Graduate School of Science and Engineering  
3-5-1 Johoku  
Hamamatsu  
Shizuoka 432-8561  
Japan

▪ **S. B. Chin**, Ph.D.  
Professor, The University of Sheffield  
Mechanical Engineering Department  
Mappin Street, Sheffield  
S1 3JD,  
United Kingdom

▪ **Xiaoyu Luo**, Ph.D.  
Professor, Department of Mathematics  
University of Glasgow

Glasgow G12 8QW

- **Stephen B M Beck**, Ph.D.  
Professor in Mechanical Engineering  
Faculty Director of Learning and Teaching – Engineering  
Department of Mechanical Engineering  
The University of Sheffield  
Mappin Street  
Sheffield  
S1 3JD  
United Kingdom
- **Xiao (Yun) Xu**, Ph.D.  
Professor of Biofluid Mechanics  
Department of Chemical Engineering  
Imperial College  
London  
United Kingdom
- **Seeram Ramakrishna**, Ph.D.  
Professor, Dean, Faculty of Engineering  
Dean's Office, Block EA, #07-26  
9 Engineering Drive 1,  
National University of Singapore,  
Singapore 117576
- **Ramesh Singh Kuldip Singh**, Ph.D.  
Senior Professor of Mechanical and Materials Engineering  
Faculty of Engineering  
University of Malaya, 50603 Kuala Lumpur, Malaysia  
Universiti Teknologi Brunei, BE1410 Gadong, Brunei Darussalam
- **Gary Hawley**, Ph.D.  
Professor of Automotive Engineering  
Dean and Medlock Chair of Engineering,  
Faculty of Engineering and Design  
University of Bath,  
Claverton Down, Bath BA2 7AY  
United Kingdom
- **Yousif Abdall Abakr**, Ph.D.  
School of Mechanical Engineering  
The University of Nottingham, Malaysia Campus  
Jalan Broga, 43500 Semenyih, Selangor  
Malaysia
- **R. Rajesh @ Nithyanandam**, Ph.D, PGChETL, MICHEM  
Professor, Department of Chemical Engineering  
Mohamed Sathak Engineering College  
Kilakarai, Tamil Nadu  
(Affiliated to Anna University)  
India
- **Chong Perk Lin**, Ph.D, PgCLTHE, FHEA, CEng, MIMechE  
Senior Lecturer of Mechanical Engineering  
Programme Leader of BEng Tech (Hons) Mechanical Engineering  
School of Computing, Engineering and Digital Technologies  
Teesside University, Middlesbrough, Tees Valley, TS1 3BX,  
United Kingdom.
- **Mohd Faizal Fauzan**, Ph.D,  
Programme Director, Mechanical Engineering  
School of Computer Science and Engineering  
Faculty of Innovation and Technology  
Taylor's University  
Taylor's Lakeside Campus  
No. 1 Jalan Taylor's, 47500 Subang Jaya  
Selangor DE  
Malaysia

[Home](#)

[Editorial  
Board](#)

[Submit a  
paper](#)

[Indexing and  
Awards](#)

[Reviewers](#)

[Articles  
in Press](#)

[Publication  
Ethics](#)

[Archi](#)



Copyright ©2006-2022 by: School of Engineering, Taylor's University

# Journal of Engineering Science and Technology (JESTEC)

[Home](#)[Editorial Board](#)[Submit a paper](#)[Indexing and Awards](#)[Reviewers](#)[Articles in Press](#)[Archives](#)

## Archive

**JESTEC**  
Journal of Engineering  
Science and Technology



**Volume 16, Issue 1, February 2021**

**Page 0001 - 0887**

[Contrast enhancement using adaptive threshold based dynamic range adjustment in LUV colour space](#)

P. M. Pardhi, S. D. Thepade  
1 - 24

[Economic operation planning of combined heat and power smart distribution system](#)

M. K. Al-Saadi  
25 - 43

[The strategic role of smart city \(Bandung care\) in the development of Bandung city](#)

D. S. Soegoto, Y. Pangestika  
44 - 51

[X-ray transmission-rate-measuring by using low-cost laboratory counter](#)

A. T. Zengin  
52 - 64

[Robust energy efficient control for wireless sensor networks via unity sliding mode](#)

S. M. Raafat, A. M. Mahmood  
65 - 84

[Analysis of distributed deep-learning based digital learning media using thin client devices for inclusion vocational school students](#)

A. Andriana, A. Ana, H. Puspita, I. Y. Wulandari  
85 - 91

[Grid-independent PV-wind-diesel generator hybrid renewable energy system for a medium population: A case study](#)

Z. W. J. Al-Shammari, M. M. Azizan, A. S. F. Rahman  
92 - 106

[Characterization of the earth dam embankment using shallow seismic data: A case study at Klong Sadao dam, southern Thailand](#)

S. Yordkayhun, K. Wattanasen  
107 - 121

[Water quality modelling and management of Diyala river and its impact on Tigris River](#)

B. Sh. Abed, M. H. Daham, A. H. Ismail  
122 - 135

[Performance of green mortar made from locally available waste tiles and silica fume](#)

M. K. Obaid, M. S. Nasr, I. M. Ali, A. A. Shubbar, K. S. Hashim  
136 - 151

[Using monkey optimization algorithm to detect neris botnet](#)

I. A. Saleh, M. A. Kamal, L. M. Ibrahim  
152 - 164

[Vetiver waste fertilizer as a growth catalyst on mung bean](#)

E. S. Soegoto, R. Jumansyah, S. Luckyardi  
165 - 175

[A review of the transformation techniques in the OFDM system](#)

M. H. M. Nerma  
176 - 193

[Real-time moving objects detection and tracking using deep-stream technology](#)

N. H. Abdulghafoor, H. N. Abdullah  
194 - 208

[Chemotherapy for cervical cancer patients: Is it a “Nightmare”?](#)

Suwendar, A. Fudholi, T. M. Andayani, H. S. Sastramihardja  
209 - 223

[Optimization of adsorption process parameters of Ni \(II\) in a bed packed-column with agro-industrial residue of yam \(dioscorea rotundata\)](#)

C. Tejada-Tovar, A. Villabona-Ortiz, M. Jiménez, A. Herrera-Barros, R. Ortega-Toro  
224 - 235

[Noma multiuser detection with MIMO for maximizing the system capacity and eliminate interference](#)

A. V. Kulkarni, S. N. Motade  
236 - 250

[Learning antenna simulation to enhance technical competency of avionics students](#)

I. Y. Wulandari, E. Ema, A. Ana, N. Indroasyoko, H. Puspita, Andriana, R. Hidayat  
251 - 258

[Preparation of copper aluminum-biochar composite as adsorbent of malachite green in aqueous solution](#)

N. R. Palapa, T. Taher, A. F. Badri, Suheryanto, R. Mohadi, A. Rachmat, A. Lesbani  
259 - 274

[Expressive shares visual secret sharing using discrete cosine transform for improved extracted secret quality](#)

R. Chaturvedi, S. D. Thepade, S. Ahirrao  
275 - 290

[Elicitation of stage discharge relationship for multi-gate controlled barrage](#)

M. S. Shamkhi, N. M. Neama  
291 - 304

[Transfer function modeling and optimization speed response of BLDC Motor E-bike using intelligent controller](#)

I. Anshory, I. Robandi, Jamaaluddin, A. Fudholi, Wirawan  
305 - 324

[Hybridization and modification of the PSO algorithm and its use in personal recognition by OPG X-ray](#)

D. S. Hammadi, A. N. Younis, F. M. Ramo  
325 - 338

[Data visualization for content marketing domain in social media](#)

D. Dharmayanti, A. M. Bachtiar, F. N. Fakhrol  
339 - 349

[The use of ultraviolet \(UV\) spectroscopy and chemometrics to quantify the percentages of adulteration in Kalosi ground roasted specialty coffee](#)

D. Suhandy, M. Yulia  
350 - 364

[Low voltage ride through capability enhancement using series connected fact devices in wind energy conversion system](#)

B. P. Ganthia, S. K. Barik, B. Nayak  
365 - 384

[Projection simulation media in technical drawing for vocational students](#)

D. Rohendi, N. Utami, A. Ana, A. Sukandar  
385 - 397

[Static polygon formation in leader- follower robotic system by utilizing RP LIDAR sensor in unknown environment](#)

B. A. Issa, A. T. Rashid  
398 - 414

[Effect of structural defects and impurities on electrical characteristics of photovoltaic cells: Multiscale modelling](#)

O. A. Al-Ani, A. M. A. Sabaawi, E. H. Sadiq, M. F. Mosleh  
415 - 426

[Improvement of cassiterite levels with variation of feed roll and separation roll speed in high tension roll separator \(HTRS\)](#)

L. Pulungan, D. N. Usman, S. Widayati, S. Maulida  
427 - 437

[Assessment of contamination vulnerability of groundwater using susceptibility index method: Semarang city as case study](#)

T. T. Putranto, A. A. Marjuanto  
438 - 454

[Street dust contamination by heavy metals in Babylon governorate, Iraq](#)

O. J. Al-Sareji, R. A. Grmasha, J. M. Salman, K. S. Hashim  
455 - 469

[The use of psychrometric analysis kit for learning air conditioning process in vocational education](#)

E. T. Berman, I. Hamidah, B. Mulyanti, A. Setiawan  
470 - 481

[Feature fusion approach for image retrieval with ordered color means based description of key points extracted using local detectors](#)

- J. H. Dewan, S. D. Thepade  
482 - 509
- [Characterization of tyre rubber ash and crumb as fine aggregate resource](#)  
S. Shahidan, S. A. Mangi, M. S. Senin, S. S. M. Zuki, M. H. W. Ibrahim  
510 - 526
- [Effects of particle size and composition of cassava peels and rice husk on the briquette performance](#)  
S. Anggraeni, S. N. Hoffah, A. B. D. Nandiyanto, M. R. Bilad  
527 - 542
- [Analytical solution of the problem of heat exchange of buried pipeline with atmosphere in the conditions of snow cover](#)  
E. V. Markov, S. A. Pulnikov, Y. S. Sysoev, D. V. Rachkov, E. P. Bragar  
543 - 555
- [Studying the effect of increasing capacity using comp technology in LTE-A networks](#)  
A. N. Hammodat, S. A. Ayoob  
556 - 570
- [3D biomechanical analysis of swimming start movements using a portable smart platform with android pie](#)  
A. Rusdiana, B. Mulyana, D. R. Nurjaya, Badruzaman, I. Imanudin, E. Fauziah, A. M. Syahid  
571 - 585
- [An Experimental identification of shear wave velocity of Bangkok clay using bender element](#)  
S. Pethrung, P. Pairojn, S. Teachavorasinskun  
586 - 600
- [Teaching the corrosion of iron particles in saline water to students with special needs](#)  
R. Maryanti, A. Hufad, A. B. D. Nandiyanto, S. Tukimin  
601 - 611
- [Incineration alternative for municipal solid waste disposal of Najaf city, Iraq](#)  
H M. M. Al-Khateeb  
612 - 620
- [Hybrid adjustment delay and superframe duration scheme to improve performance IEEE 802.15.4 networks](#)  
E. Yundra, U. T. Kartini, I. W. Susila  
621 - 634
- [Students' perception of online learning and institution's engagement during the Covid-19 pandemic: A survey study of Taylor's design, architecture, and engineering students](#)  
P. C. L. Koh, S. K. Wong  
635 - 651
- [A smartphone indoor localization based on affinity propagation clustering and Kullback-Leibler multivariate Gaussian](#)  
O. A. Abdullah  
652 - 665
- [Digital literacy skills of vocational school teachers](#)  
S. Saripudin, I. B. Budiyanto, R. Listiana, A. Ana  
666 - 680
- [Adaptive cruise control of a simscape driveline vehicle model using PID controller](#)  
A. Mahmood, M. Almageed, M. N. Noaman, Y. H. S. Alnema  
681 - 695
- [Low sulphidation Au-Ag epithermal associated minerals using T<sup>2</sup> hotelling's method](#)  
D. N. Usman, L. Pulungan, S. Widayati, F. Hirnawan, N. Sulaksana, I. Haryanto, H. Nuryahya  
696 - 710
- [Deep-intrusion detection system with enhanced UNSW-NB15 dataset based on deep learning techniques](#)  
A. M. Aleesa, M. Younis, A. A. Mohammed, N. M. Sahar  
711 - 727
- [E-monitoring the vulnerability of malnutrition of children using the TOPSIS method](#)  
S. Nurhayati, R. Lubis  
728 - 736
- [Compare arithmetic coding to the wavelet approaches for medical image compression](#)  
N. H. Salman  
737 - 749
- [Finite element analysis of two-way hollow high strength self-compacting fiber reinforced concrete slab under the effects of uniform repeated load \(using two-way piping system\)](#)  
W. A. Tameemi, N. A. Alwash  
750 - 761
- [Experimental investigation on an elevated basin solar still with integrated internal reflectors and inclined fins](#)  
W. H. Alawee, H. A. Dhahad, I. S. Ahmed, T. A. Mohammad

762 - 777

[Design and development of animation media for isomorphous binary phase diagram of engineering material courses](#)

M. Komaro, Ariyano, A. Suherman, A. Ana, R. Pangestu

778 - 791

[Effect of curing time on compressive strength of agrostone building material with water hyacinth, bagasse and grass bio-fillers – a comparative study](#)

Y. M. Degu

792 - 806

[Design and implementation of electronic examination device for improving the blind students' comfort](#)

H. Hidayat, N. S. Hasibuan, M. F. Wicaksono

807 - 815

[Palmprint recognition system based on proposed features extraction and \(c5.0\) decision tree, k-nearest neighbor \(KNN\) classification approaches](#)

M. S. Kadhm, H. Ayad, M. J. Mohammed

816 - 831

[Prediction of the maximum throat width due to contraction in rectangular channels under critical flow conditions using computational fluid dynamics](#)

F. A. Alshitali, L. A. Alasadi, A. A. W. Alkraid, M. A. Aljumaili

832 - 841

[An empirical numerical relation between evaporation rate and flash point of common industrial liquid materials](#)

J. F. Mata-Segreda

842 - 850

[E-Rubric to measure employability skills](#)

S. Subekti, A. Ana, M. Muktiarni, V. Dwiyantri

851 - 860

[Pneumonia detection using CNN through chest X-ray](#)

H. GM, M. K. Gourisaria, S. S. Rautaray, M. Pandey

861 - 876

[Pelesir: Digital platform with a combination of frameworks to introduce tourism in southern of West Java, Indonesia](#)

G. Undang, A. M. Tanjung, T. Maskun

877 - 887

[Home](#)[Editorial Board](#)[Submit a paper](#)[Indexing and Awards](#)[Reviewers](#)[Articles in Press](#)[Archives](#)

## **DESIGN AND IMPLEMENTATION OF ELECTRONIC EXAMINATION DEVICE FOR IMPROVING THE BLIND STUDENTS' COMFORT**

H. HIDAYAT\*, NANRA S. HASIBUAN, MOCHAMAD F. WICAKSONO

Computer Engineering Department, Universitas Komputer Indonesia,  
Jalan Dipati Ukur, No. 112-116 Bandung 40162, Jawa Barat, Indonesia

\*Corresponding Author: [hidayat@email.unikom.ac.id](mailto:hidayat@email.unikom.ac.id)

### **Abstract**

The aim of the research is to design and implement an electronic examination device for helping students while conducting school examinations. The method used is an experimental method including literature study, process design, design implementation, and test the design. The system designed consists of two parts, namely a device for blind students and the exam monitoring application. The student device used Raspberry Pi as a data processor, six push-buttons as braille codes, and five push-buttons as navigation buttons. It is also equipped with a text-to-speech conversion application. The examination monitoring application is functioned to process the registration of the examinees, to process the exam questions, and to record the exam results of the examinees. The results of this research were the examination device and exam monitoring application can function properly. This result can have the effect of improving students' comfort in taking school exams.

Keywords: Blind student, Examination device, Raspberry Pi, Text to speech.



## 1. Introduction

Student assessment was a mandatory for all students in each school. Test scores were used to measure student achievement during learning process at school [1, 2]. In addition, the purpose of assessment is to provide a feedback for schools and monitor trends in learning. In fact, the implementation of the test was applied to all students including blind students. Nowadays, students conduct tests using computer-based exams that were connected to the server either locally or the internet. Students must have the ability to use computers properly in order to provide answers through computers quickly and correctly. In contrast, blind students have difficulties in operating computers normally due to limitations in vision and difficulty in using a computer keyboard with large numbers of keys. However, several blind people could use a special computer that was assisted with certain software to convert text on a monitor screen to voice.

Voice technologies applications that apply voice interface would be beneficial for blind students [3]. Creators developed an electronic-based examination using a text-to-speech application to assist blind students on exam [4-6]. Stodden et al. [7] mentioned that the use of voice technology in education could improve reading skill blind students effectively. In line with Lucic et al. [8] study, their speech technology-based application successfully gained students enthusiasm in completing the learning task. Even though speech technology had produced a lot of research into learning devices for the blind, however, all of the above research still used common computer device that is not easy to operate by blind people.

The purpose of this research is to design and implement an electronic examination device for blind as solution to their computer-friendly limitations. The method used an experimental method including literature study, process design, design implementation, and test the design. The system designed consists of two parts, namely a device for blind students and the exam monitoring application. The device was consisting of device for student and exam monitoring application for teacher or examiner. The student device must have a text-to-speech application to guide students during exam and push buttons for inputting braille code such as in Hidayat et al. [9] study. The examination monitoring application must be able to record identity and question answers from blind examinee.

## 2. Method

The system designed was illustrated in Fig. 1. There were three main parts of the system, namely student devices, servers, and routers. First, the student kit consists of Raspberry Pi 3 and eleven push buttons as input (six push buttons for braille code and five push buttons for navigation functions). Secondly, the server was used to record student identity and answer questions. Finally, a router was used to connect between student devices and the server.

### 2.1. Hardware design

First, Raspberry Pi, is a mini-computer that included in the Single-Board Circuit (SBC) type. It is used in many applications as the main controller. For example, the Raspberry Pi microprocessor is used as a replacement for the PC server to combine the gateway node, database server, and web server [10]. In general, Raspberry Pi was used for monitoring and controlling systems [11, 12]. In other studies,

Raspberry Pi is used to help blind people recognize the writing via camera by converting from the image to speech [13, 14]. It already had WiFi embedded in the board so there was no need to add a separate WiFi module. In this research, Raspberry Pi 3 was used as a mini-computer that receives data from push buttons, processes data, sends data to the server computer, receives text questions from the server computer, and converts text documents questions to speech. Braille code from push buttons is processed and converted into letters, numbers, words, or sentences. Each letter or word would be converted to speech for validating that the letters entered correspond with the user entered.

Secondly, the push buttons were used for a combination of braille code as input data and navigation. The order of the buttons was designed according to the order of the braille typewriter buttons to help blind students operate this device properly. The combination of six push buttons (1-6) was connected to the GPIO pins on the Raspberry Pi 3 and placed on the device as shown in Fig. 2. Furthermore, one push button (7) was used as a validation button, which was to validate the braille code combination, two pushbuttons were used for the back (8) and next buttons (9). The user could return to the previous question by pressing the back button or move to the next question by pressing the next button. One push button (10) was used as an enter button, which stores any input data that had passed the previous validation process into an array. Then, one pushbutton (11) was used as a delete button, which erases input data that had been temporarily stored in an array. Thoroughly, the placement of the navigation buttons on the device is shown in Fig. 3.

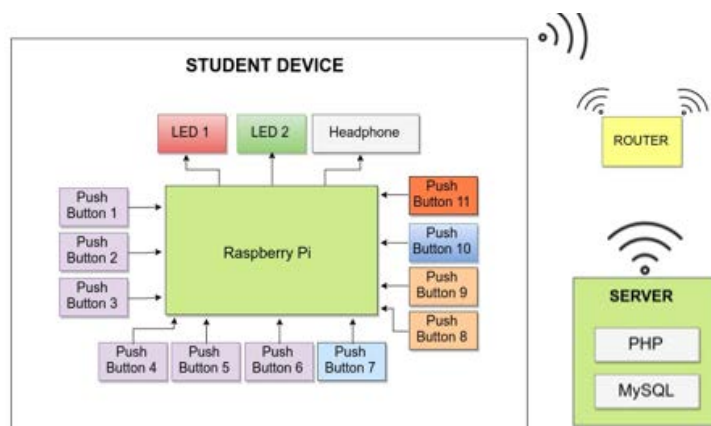
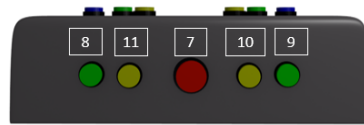


Fig. 1. Block diagram system.



Fig. 2. Braille node combination buttons.



**Fig. 3. The navigation buttons.**

Third, two LEDs were used for indicators. One LED was an indicator of active or non-active device conditions. It would light up if the device were active and vice versa. Another LED was used for the connection indicator between student's device and computer server. It would light up if the device were connected to the server. These were placed on the front of the device and seen by the teacher or examiner. Lastly, a headphone was used to hear the speech from the device. The speech was questions, instructions, and the spelling of letters or numbers. It is important to use this component in order to make test participants focused on the speech listened.

Another device used in this system was router and server. The router functions as a link between the server computer and students' devices in order to send and receive data. The device was given an IP address class C to connect with each other in the same network. The router used in this study was a wireless router so there was no cable needed for connection. The server computer had an important role in this system. It is a website application that was built using Hypertext Preprocessor (PHP) programming language and used MySQL as a database. It could be used by examiner or teacher to carry out processes as follows: 1) to save the identity of the examinee; 2) to save the answer data sent from the student's device; 3) to write the exam questions with answers; 4) to monitor the process exam; 5) to process the answer data sent from students' devices into information on the results of the exam; and 6) to get exam results.

## 2.2. Software design

Figure 4 shows the flow diagram on student devices. The explanation of Fig. 4 is as follows: Firstly, (1) the program starts the application, afterward (2) the initialization process was carried out on a number of variables and constants that were needed. Then, (3) the program would run a website welcome speech. Thereafter, (4) the system would request a connection to the server computer. Next, (5) it would validate whether the device is connected to the server or not, otherwise, it would continue to server connection request. After connecting to the server, (6) it would accept test questions from the computer server. Subsequently, (7) it would run procedure to enter name data. Afterward, (8) it ran the procedure to enter the exam identity number, then (9) it processed the procedure to read the questions and enter answers. Every input given by the user would be converted into text by the system. Furthermore, the text would be converted into speech using the text-to-speech application. It used to enter data validation. Finally, (10) the device stored data (identity, answers, and exam numbers) to the database.

## 2.3. Interface of web application design

This exam monitoring application was developed using a website platform. Previously, users had to register in order to access the program system via the registration page. After registering, users must log in via the login page. If the login process was successful then the user can access the exam monitoring system program. After a successful login process, the system would display a dashboard

page that displays the menus in monitoring program. The dashboard application is shown in Fig. 5.

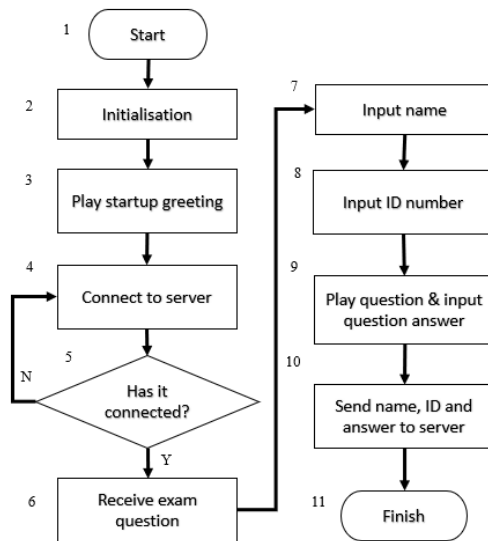


Fig. 4. Flow chart of student device.

### 3. Results and Discussion

Test of the system was conducted in two main parts, namely test of the students’ device and test of the exam monitoring application. Test of students’ device was conducted in several steps to test its functionality. Firstly, we tested braille code conversion function. This test aimed to validate the success of the conversion program from the combination of six push buttons into letter and number and convert them to speech. The experiment results indicated 100% successfully (see Table 1). Every letter and number can be detected by system. Additionally, they can be converted to speech correctly. Furthermore, a test of letter combinations conversion for student name. Meanwhile, numbers combinations conversion for student ID into text was conducted to validate the word that inputted by the user. This experiment was successful (see Table 2). Five participant names and IDs can be read correctly.

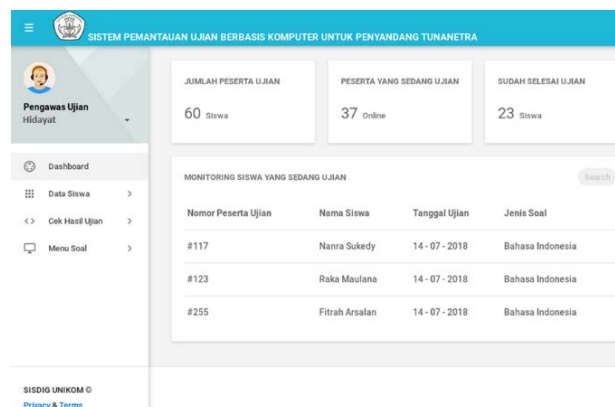


Fig. 5. The dashboard of monitoring application.

**Table 1. The results of testing the conversion of braille letters and speech.**

| Letter | Braille code from buttons | Input data | Convert to letter | Test |   |   |   |   | Convert to speech |
|--------|---------------------------|------------|-------------------|------|---|---|---|---|-------------------|
|        |                           |            |                   | 1    | 2 | 3 | 4 | 5 |                   |
| A/1    | ○○●○○○                    | 110111     | A                 | √    | √ | √ | √ | √ | Success           |
| B/2    | ○●●○○○                    | 100111     | B                 | √    | √ | √ | √ | √ | Success           |
| C/3    | ○○●●○○                    | 110011     | C                 | √    | √ | √ | √ | √ | Success           |
| D/4    | ○○●●●○                    | 110001     | D                 | √    | √ | √ | √ | √ | Success           |
| E/5    | ○○●○●○                    | 110101     | E                 | √    | √ | √ | √ | √ | Success           |
| F/6    | ○●●●○○                    | 100011     | F                 | √    | √ | √ | √ | √ | Success           |
| G/7    | ○●●●●○                    | 100001     | G                 | √    | √ | √ | √ | √ | Success           |
| H/8    | ○●●○●○                    | 100101     | H                 | √    | √ | √ | √ | √ | Success           |
| I/9    | ○●○●○○                    | 101011     | I                 | √    | √ | √ | √ | √ | Success           |
| J/0    | ○●○●●○                    | 101001     | J                 | √    | √ | √ | √ | √ | Success           |
| K      | ●○●○○○                    | 010111     | K                 | √    | √ | √ | √ | √ | Success           |
| L      | ●●●○○○                    | 000111     | L                 | √    | √ | √ | √ | √ | Success           |
| M      | ●○●●○○                    | 010011     | M                 | √    | √ | √ | √ | √ | Success           |
| N      | ●○●●●○                    | 010001     | N                 | √    | √ | √ | √ | √ | Success           |
| O      | ●○●○●○                    | 010101     | O                 | √    | √ | √ | √ | √ | Success           |
| P      | ●●●●○○                    | 000011     | P                 | √    | √ | √ | √ | √ | Success           |
| Q      | ●●●●●○                    | 000001     | Q                 | √    | √ | √ | √ | √ | Success           |
| R      | ●●●○●○                    | 000101     | R                 | √    | √ | √ | √ | √ | Success           |
| S      | ●●○●○○                    | 001011     | S                 | √    | √ | √ | √ | √ | Success           |
| T      | ●●○●●○                    | 001001     | T                 | √    | √ | √ | √ | √ | Success           |
| U      | ●○●○○●                    | 010110     | U                 | √    | √ | √ | √ | √ | Success           |
| V      | ●●●○○●                    | 000110     | V                 | √    | √ | √ | √ | √ | Success           |
| W      | ○●○●●●                    | 101000     | W                 | √    | √ | √ | √ | √ | Success           |
| X      | ●○●●○○                    | 010010     | X                 | √    | √ | √ | √ | √ | Success           |
| Y      | ●○●●●●                    | 010000     | Y                 | √    | √ | √ | √ | √ | Success           |
| Z      | ●○●○●●                    | 010100     | Z                 | √    | √ | √ | √ | √ | Success           |
| -      | ●○○○●●                    | 011110     | -                 | √    | √ | √ | √ | √ | Success           |

**Table 2. Results of testing combinations of letters/ numbers.**

| No. | Letters/ numbers input                              | Text combination result | Speech |
|-----|---|-------------------------|--------|
| 1   | [N, A, N, R, A, -, S, U, K, E, D, Y]                | NANRA-SUKEDY            | √      |
| 2   | [A, L, F, A, T, H, -, R, A, J, A, Y, A]             | ALFATH-RAJAYA           | √      |
| 3   | [M, U, H, A, M, M, A, D, -, P, E, P, R, A, N, D, I] | MUHAMMAD-PEPRANDI       | √      |
| 4   | [M, U, T, I, A, R, A, -, H, S, B]                   | MUTIARA-HSB             | √      |
| 5   | [R, I, Z, K, Y, -, A, N, A, N, D, A]                | RIZKY-ANANDA            | √      |
| 6   | [1, 0, 2, 1, 4, 1, 1, 7]                            | 10214117                | √      |
| 7   | [1, 0, 2, 1, 4, 1, 1, 8]                            | 10214118                | √      |
| 8   | [5, 0, 3, 2, 3, 7, 8, 0]                            | 50323780                | √      |
| 9   | [2, 0, 1, 1, 4, 7, 8, 2]                            | 20114782                | √      |
| 10  | [3, 0, 7, 9, 9, 5, 4, 2]                            | 30799542                | √      |

Furthermore, a test had been conducted on the conversion of question text and answer options (in *.txt* format) to speech. These question-and-answer options were parsed by the program and converted into speech. The duration time of reading each question is shown in Table 3. The average duration of speech by word was 0.65 s. Speech duration was influenced by the number of characters that compose the word, especially punctuation characters, such as period (.) or comma (,).

**Table 3. Reading duration question and answer choices.**

| Question number | Word number of answer choices | Duration for question (s) | Duration for speech by word (s) |
|-----------------|-------------------------------|---------------------------|---------------------------------|
| 1               | 8                             | 4                         | 0.50                            |
| 2               | 6                             | 3                         | 0.50                            |
| 3               | 8                             | 4                         | 0.50                            |
| 4               | 4                             | 2                         | 0.50                            |
| 5               | 12                            | 8                         | 0.66                            |
| 6               | 8                             | 8                         | 1                               |
| 7               | 29                            | 16                        | 0.55                            |
| 8               | 33                            | 22                        | 0.67                            |
| 9               | 25                            | 20                        | 0.8                             |
| 10              | 8                             | 7                         | 0.87                            |
|                 |                               |                           | Average = 0.65                  |

Additionally, the black box test on the exam monitoring application was conducted to verify the functions of every part of the application. All parts indicated that the program could function successfully (see Tables 4 and 5). Username form, password form, and enter button could work properly. On the registration page, full name, username, password, password confirmation, email, and contact number form, as well as register button could function properly.

Another test was conducted to verify data on the server. It could store examinees name, ID number, and their answers from student device. Experimental result given in Table 6 has shown that the server could store data entered by the student device correctly.

**Table 4. Login page result.**

| No. | Component Name | Result  |
|-----|----------------|---------|
| 1   | Username Form  | Success |
| 2   | Password Form  | Success |
| 3   | Enter Button   | Success |

**Table 5. Registration page result.**

| No. | Component Name           | Result  |
|-----|--------------------------|---------|
| 1   | Nama Lengkap Form        | Success |
| 2   | Username Form            | Success |
| 3   | Password Form            | Success |
| 4   | Konfirmasi Password Form | Success |
| 5   | Email Form               | Success |
| 6   | Nomor HP Form            | Success |
| 7   | Daftar Button            | Success |

**Table 6. Data storage result.**

| No. | Data on student device   | Data stored on server computer   | Result |
|-----|--|--|--------|
| 1   | Name: NANRA SUKEDY<br>Examinee No.: 10214117<br>Answer: A, B, C, B, D      | Name: NANRA SUKEDY<br>Examinee No.: 10214117<br>Answer: A, B, C, B, D      | Valid  |
| 2   | Name: ALFATH RAJAYA<br>Examinee No.: 10214118<br>Answer: D, A, C, B, A     | Name: ALFATH RAJAYA<br>Examinee No.: 10214118<br>Answer: D, A, C, B, A     | Valid  |
| 3   | Name: MUHAMMAD PEPRANDI<br>Examinee No.: 50323780<br>Answer: B, C, D, B, A | Name: MUHAMMAD PEPRANDI<br>Examinee No.: 50323780<br>Answer: B, C, D, B, A | Valid  |
| 4   | Name: MUTIARA HSB<br>Examinee No.: 20114782<br>Answer: A, C, D, B, C       | Name: MUTIARA HSB<br>Examinee No.: 20114782<br>Answer: A, C, D, B, C       | Valid  |
| 5   | Name: RIZKY ANANDA<br>Examinee No.: 30799542<br>Answer: C, B, A, C, D      | Name: RIZKY ANANDA<br>Examinee No.: 30799542<br>Answer: C, B, A, C, D      | Valid  |

All experiment results indicated that the device and exam monitoring application is user friendly and could work properly. The monitoring application could record and show information about students' names, IDs, and answers. We considered that the device designed was very suitable for the use of blind students especially in developing countries. It is because it was built with a mini PC so that the manufacturing price was cheaper and smaller (width 11 cm x height 6 cm x length 18 cm) than an ordinary computer.

#### 4. Conclusion

In conclusion, the exam monitoring application can send and receive data to the student device correctly. Moreover, the server can store entered data successfully. As a result, this electronic is considered as an assistive technology for blind student in conducting the electronic based examination at school, especially in developing countries.

#### References

1. Norton, L.; Norton, B.; and Shannon, L. (2013). Revitalising assessment design: what is holding new lecturers back? *Higher Education*, 66(2), 233-251.
2. Klenowski, V. (2017). Excellence in university assessment: learning from award-winning practice, by David Carless. *Assessment in Education: Principles, Policy and Practice*, 24(4), 506-508.
3. Parr, M. (2012). The future of text-to-speech technology: how long before it's just one more thing we do when teaching reading? *Procedia-Social and Behavioral Sciences*, 69, 1420-1429.
4. Aswathy, M.S.; and Sameul, L. (2019). E-examination using voice interface for visually impaired students. *International Research Journal of Engineering and Technology*, 6(1), 1213-1218.
5. Azeta, A.A.; Inam, I.A.; and Daramola, O. (2018). A voice-based e-examination framework for visually impaired students in open and distance learning. *Turkish Online Journal of Distance Education*, 19(2), 34-46.
6. Khan, S.; Verma, S.; Agarwal, S.; Krishnatrey, P.; and Sharma, S. (2015). Voice based online examination for physically challenged. *International Journal of Computer Science and Information Technology*, 5(2), 58-61.
7. Stodden, R.A.; Roberts, K.D.; Takahashi, K.; Park, H.J.; and Stodden, N.J. (2012). Use of text-to-speech software to improve reading skills of high school struggling readers. *Procedia Computer Science*, 14, 359-362.
8. Lučić, B.; Ostrogonac, S.; Sedlar, N.V.; and Sečujski, M. (2015). Educational applications for blind and partially sighted pupils based on speech technologies for Serbian. *The Scientific World Journal*, 2015, 1-14.
9. Hidayat, H.; and Prafanto, A. (2016). Electronic voice for set of the syllables from braille code input based on microcontroller. *Indian Journal of Science and Technology*, 9(47), 1-8.
10. Younis, M. I.; and Hussein, T. F. (2018). Design and implementation of a contactless smart house network system. *International Journal of Electrical and Computer Engineering*, 8, 4663-4672.

11. Alkandari, A.; and Moein, S. (2018). Implementation of monitoring system for air quality using raspberry pi: experimental study. *Indonesian Journal of Electrical Engineering and Computer Science*, 10(1), 43-49.
12. Perumal, V.S.A.; Baskaran, K.; and Rai, S.K. (2017). Implementation of effective and low-cost building monitoring system (BMS) using raspberry pi. *Energy Procedia*, 143, 179-185.
13. Goel, A.; Sehrawat, A.; Patil, A.; Chougule, P.; and Khatavkar, S. (2018). Raspberry pi based reader for blind people. *International Research Journal of Engineering and Technology*, 5(6), 1639-1642.
14. Muthusenthil, B.; Joshuva, J.; Kishore, S.; and Narendiran, K. (2018). Smart assistance for blind people using raspberry pi. *International Journal of Advance Research, Ideas and Innovations in Technology*, 4(2), 884-891.