

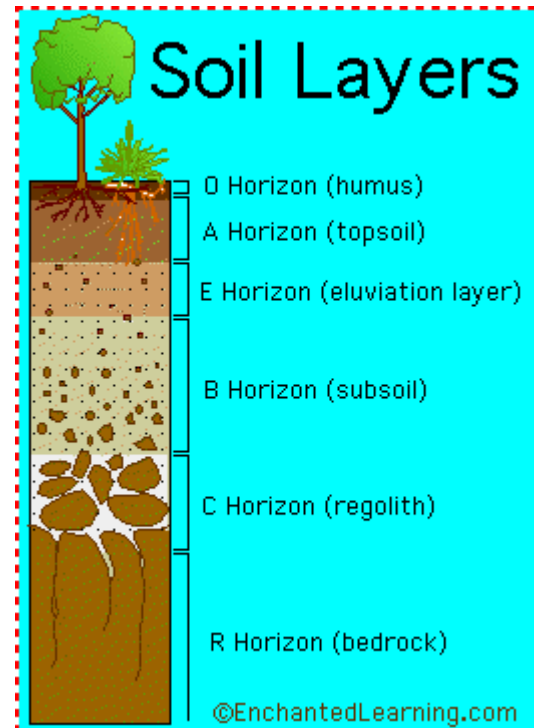
# Konsep dan Definisi

LAHAN

# Land=lahan, soil = tanah

## Lapisan tanah

- ▶ Land= lahan
- ▶ Bagian dari bumi yang tidak tertutup oleh air



Landscape= bentang alam



# Urban landscape





















# Rural landscape



# landform

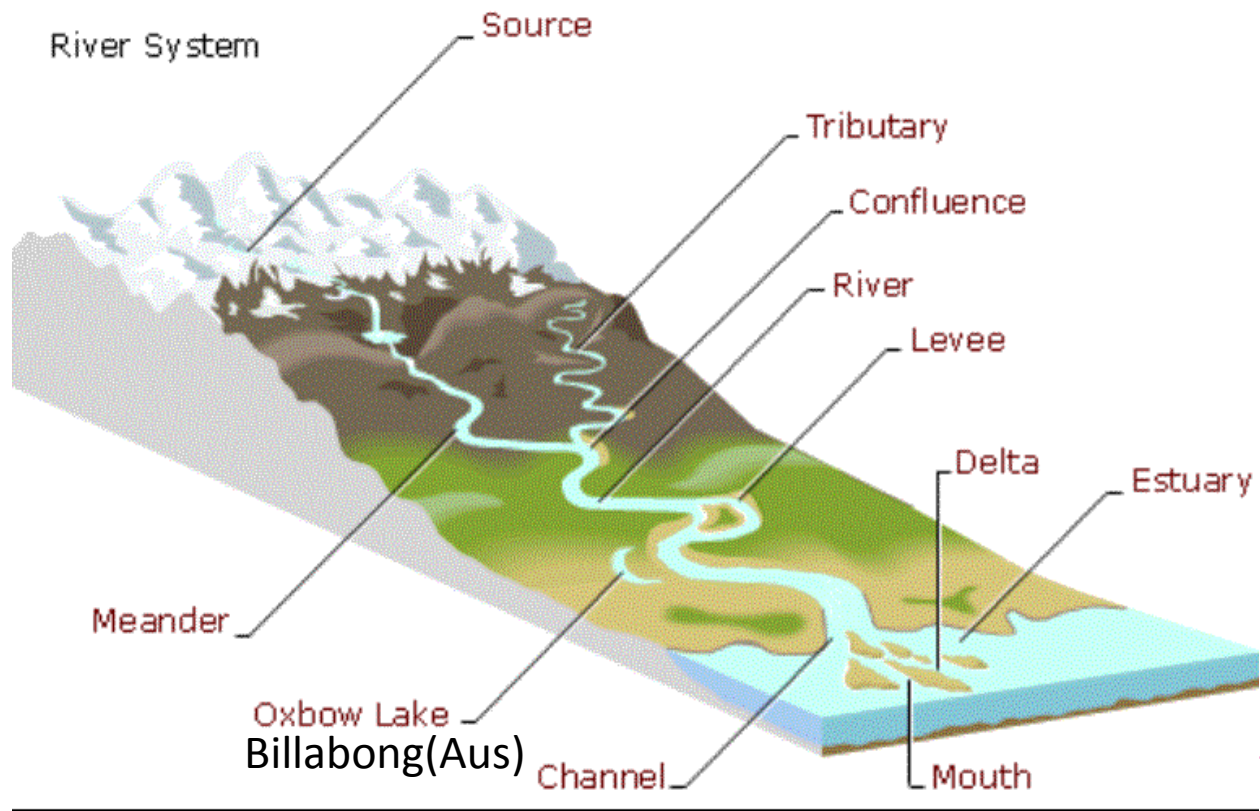
- ▶ Landform or physical feature comprises a geomorphological unit, and is largely defined by its surface form and location in the landscape, as part of the terrain, and as such, is typically an element of topography.
- ▶ Landform elements also include seascape and oceanic waterbody interface features such as bays, peninsulas, seas etc.



# landform



# landform

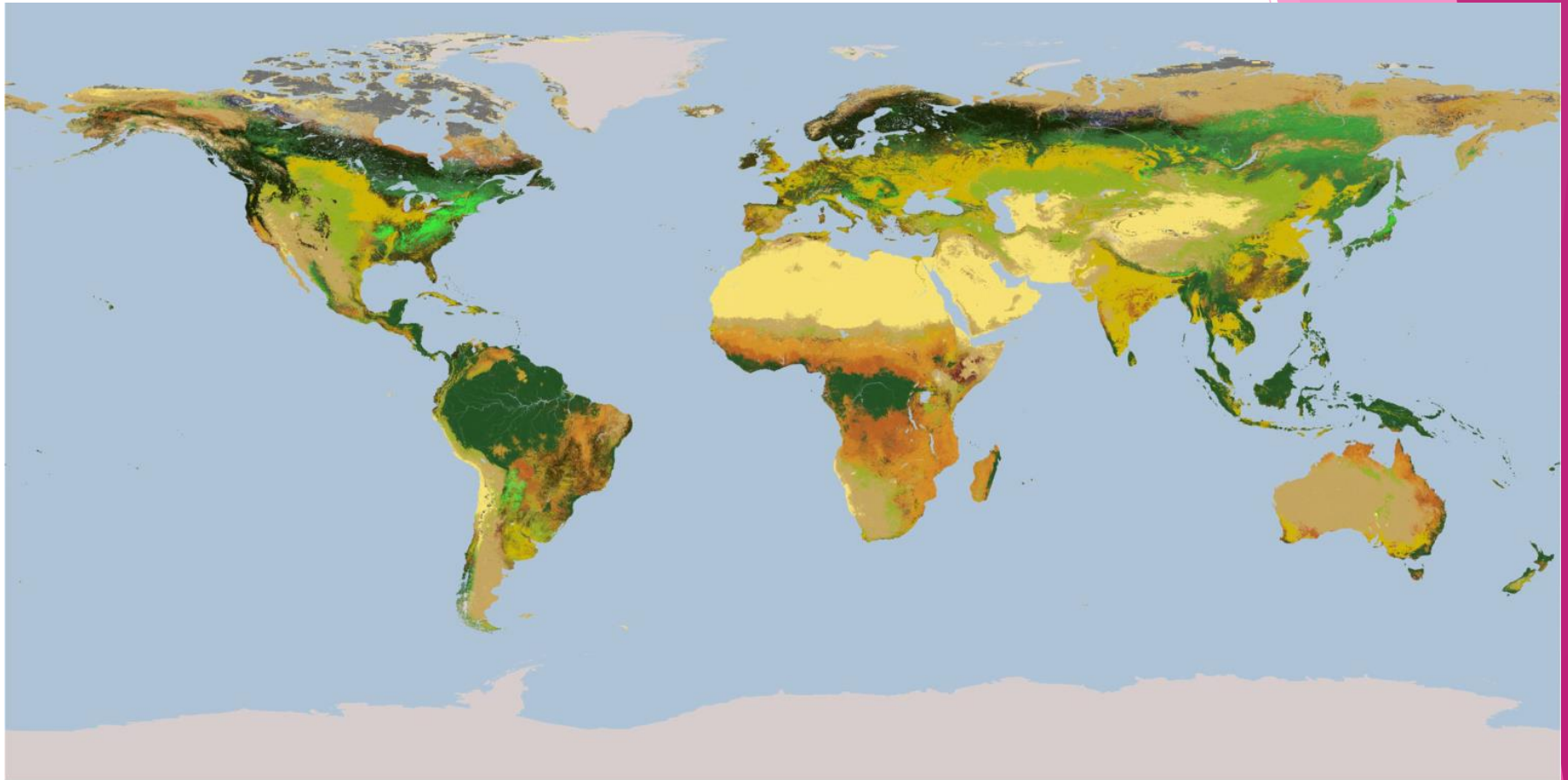




# Land cover

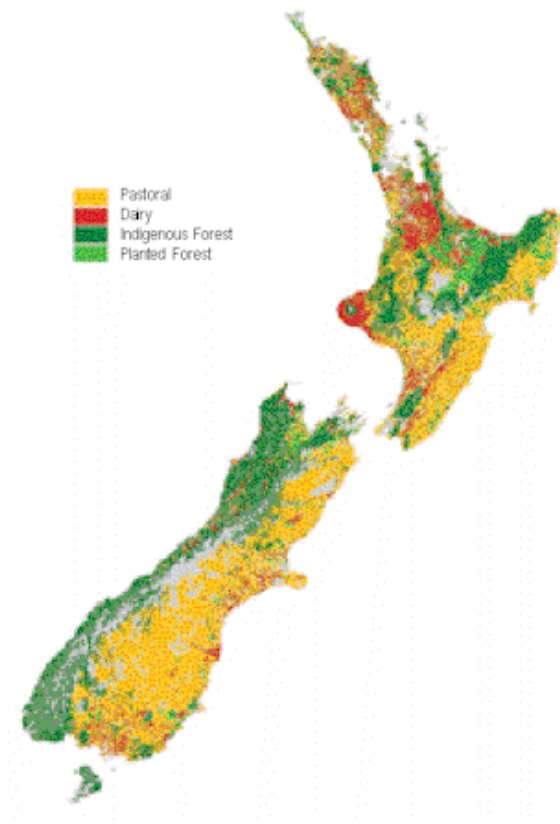
- ▶ Land cover is the physical material at the surface of the earth.
- ▶ Land covers include grass, asphalt, trees, bare ground, water, etc.
- ▶ There are two primary methods for capturing information on land cover:
  - ▶ field survey
  - ▶ analysis of remotely sensed imagery.

# Land cover dunia

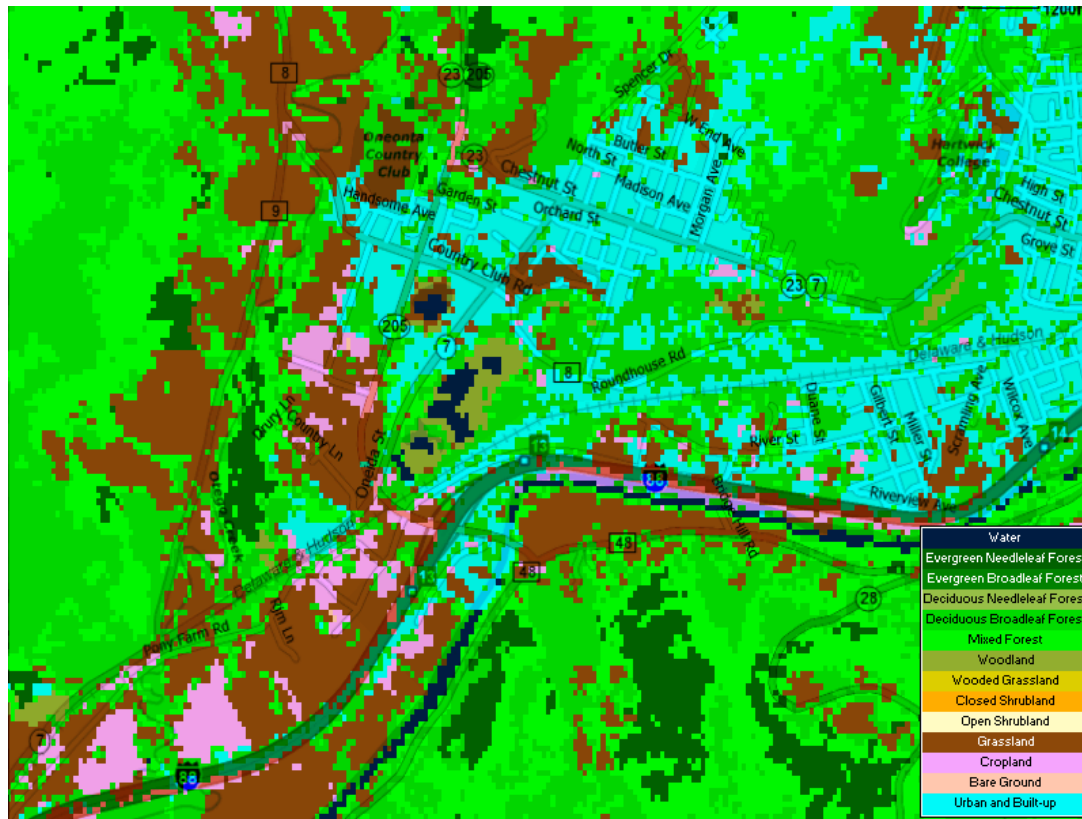




# Peta land cover



# landcover





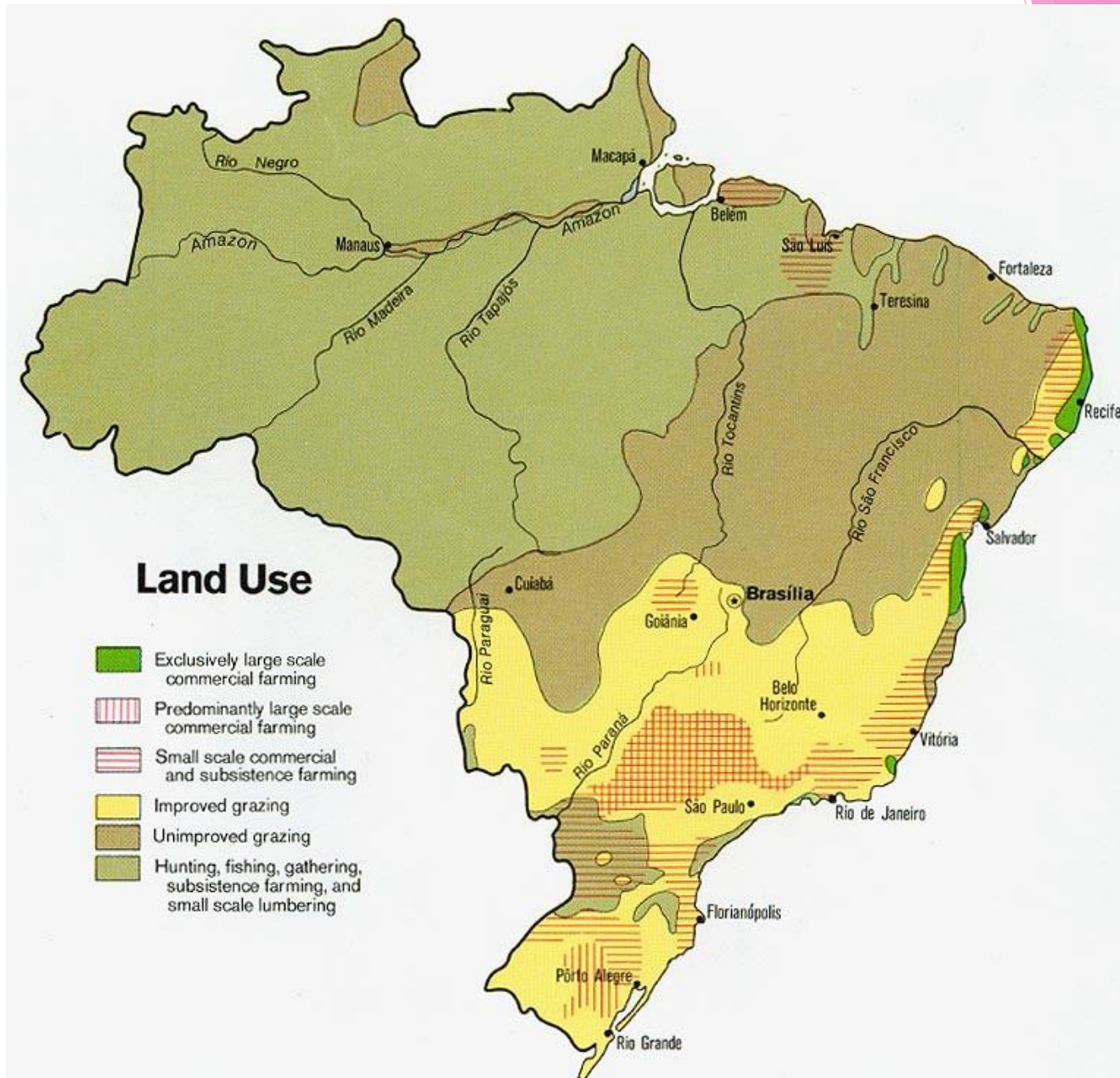
# Land use

- ▶ Land use is the human modification of natural environment or wilderness into built environment such as fields, pastures, and settlements.

# Land use

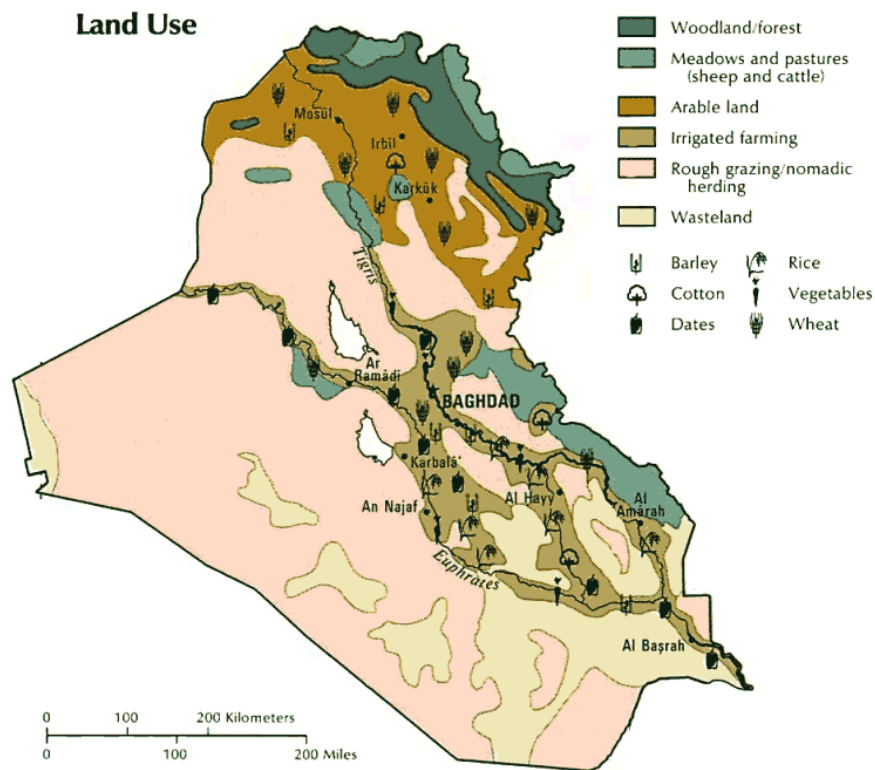


# Land use = guna lahan





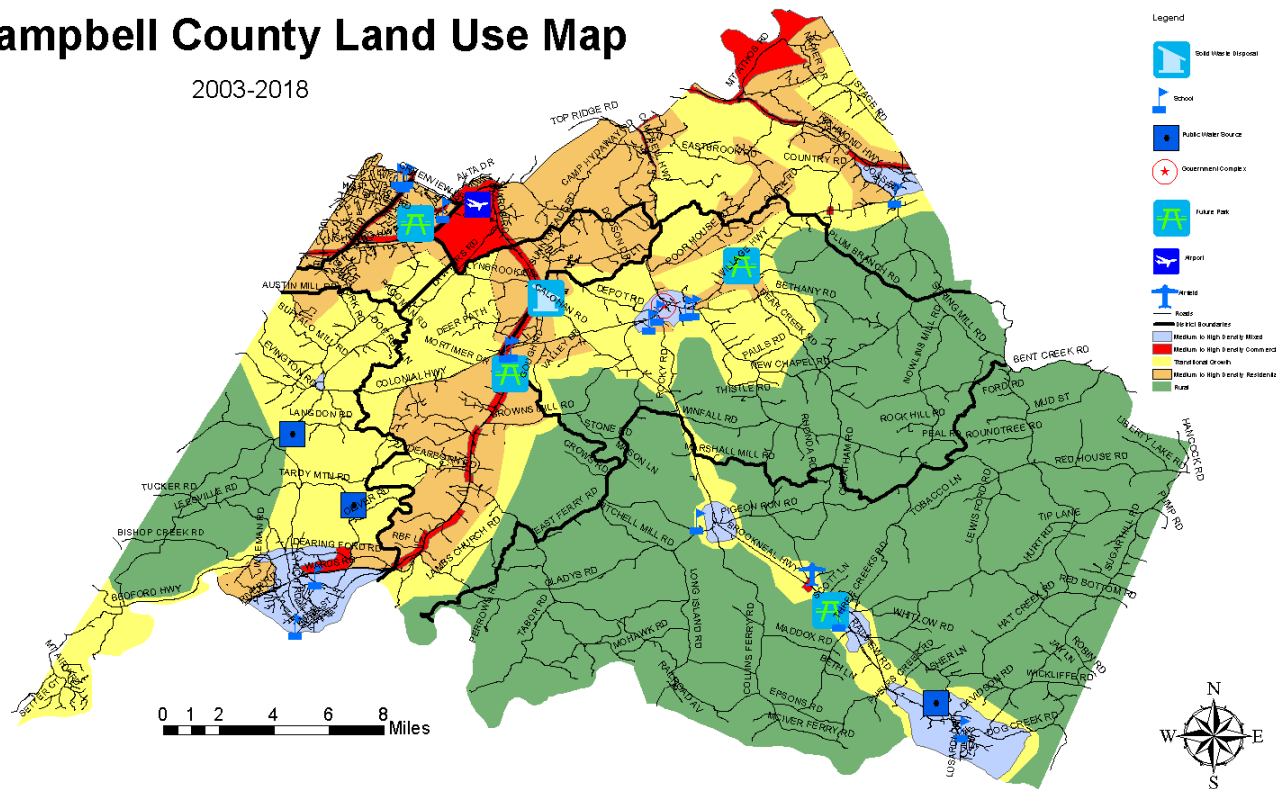
# Land use = guna lahan



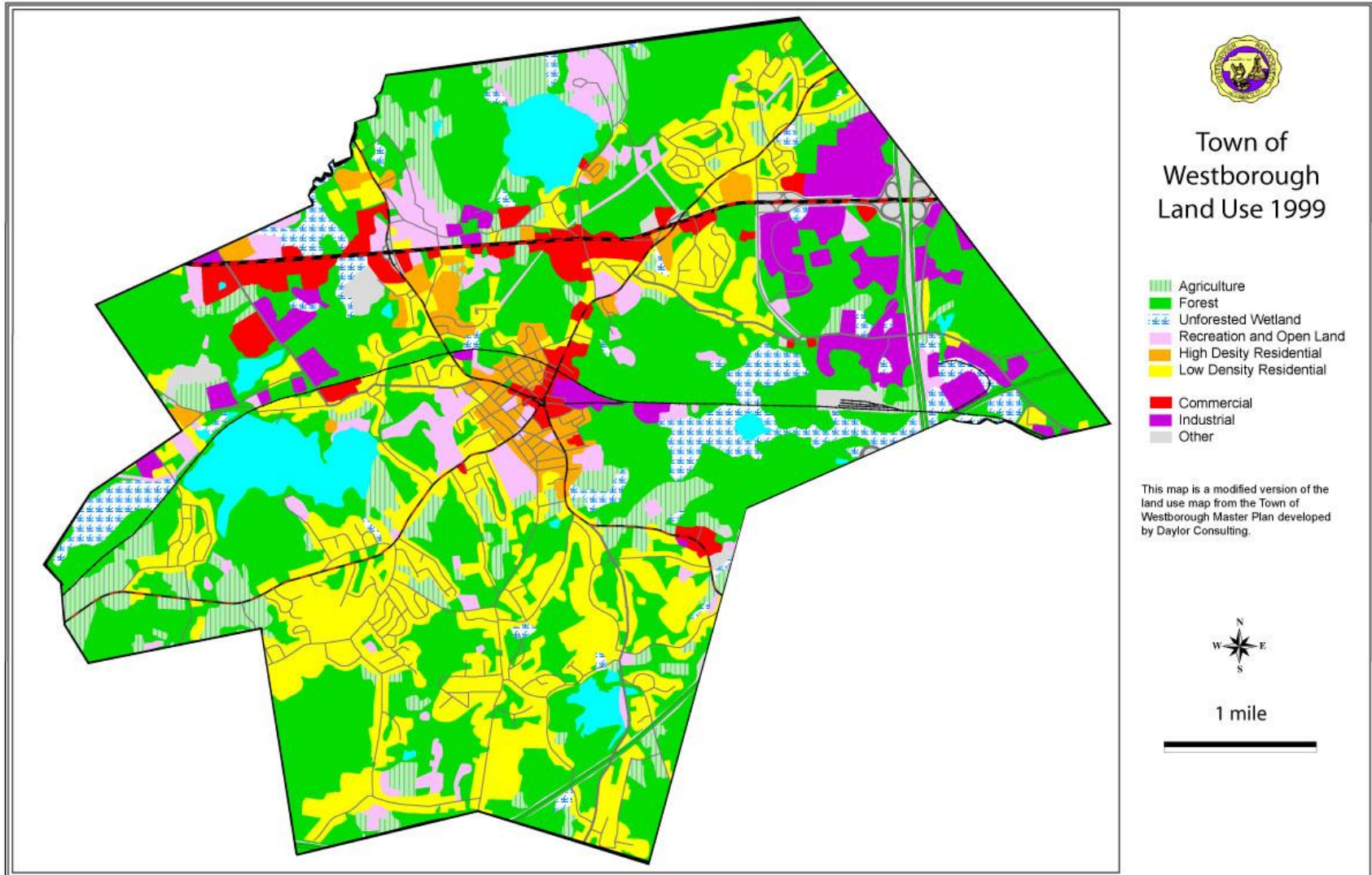
# Land use = guna lahan

## Campbell County Land Use Map

2003-2018



# Guna lahan Kota Westborough





# Rencana guna lahan

