

Lab Pemrograman Berorientasi Objek

Pengantar dan Instalasi Pemrograman Berorientasi Objek

Perangkat Lunak yang Dibutuhkan

- *Java Development Kit (JDK)*
- Text Editor
 - NotePad++, UltraEdit, JCreator, Gel, dsb
- *Software IDE (Integrated Development Environment)*
 - IDE Netbeans dan IDE Eclipse

Mengunduh Perangkat Lunak Inti

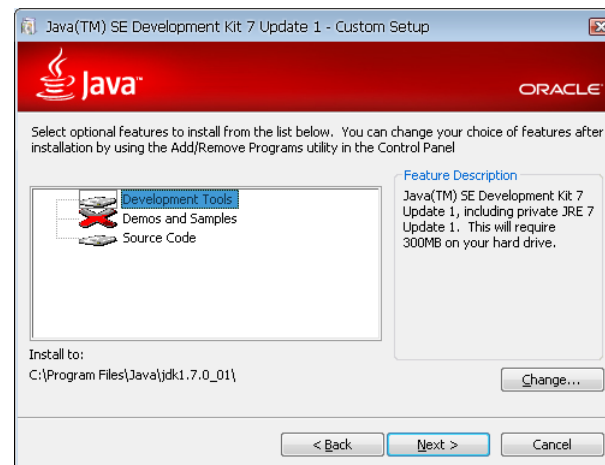
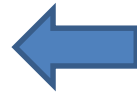
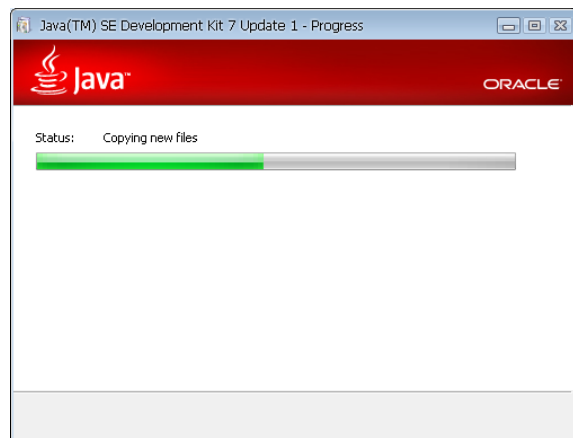
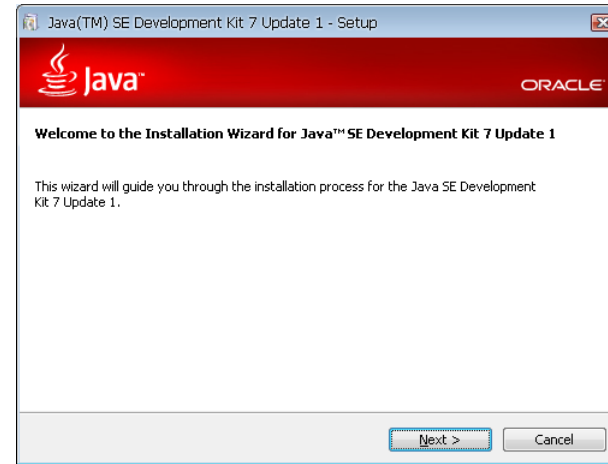
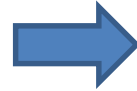
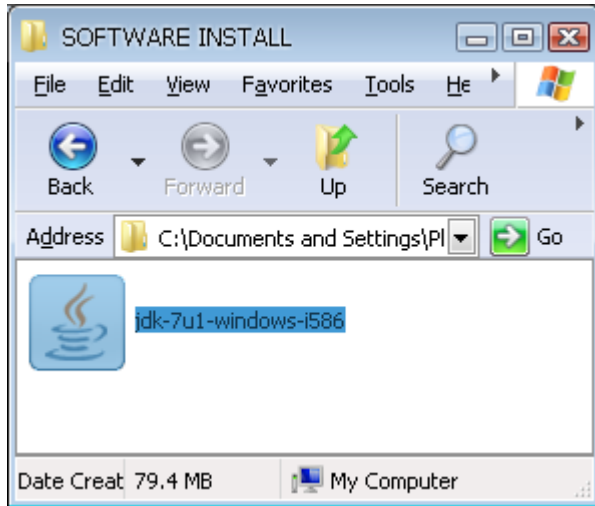
- Mengunduh JDK

<http://www.oracle.com/technetwork/java/javase/downloads/index.html>

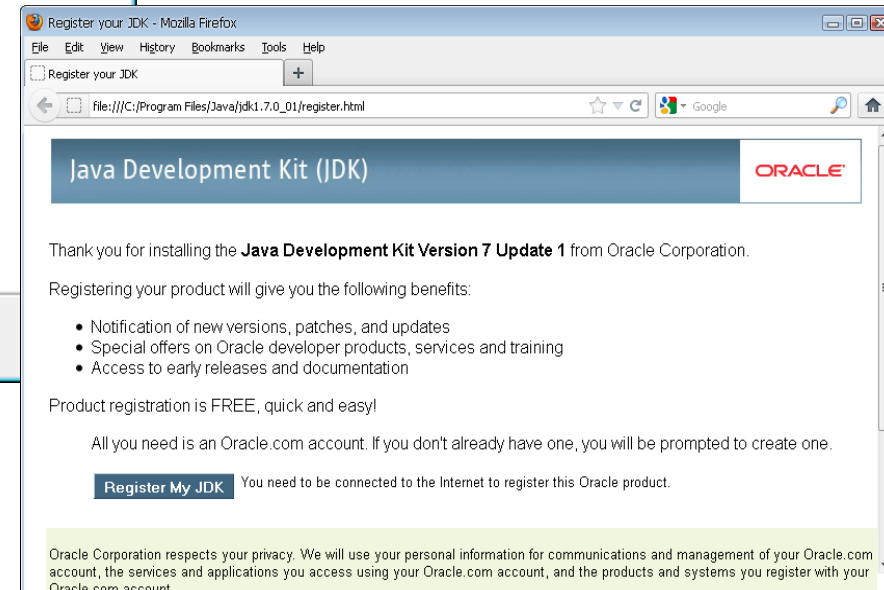
- Mengunduh JCreator

<http://www.jcreator.org/download.htm>

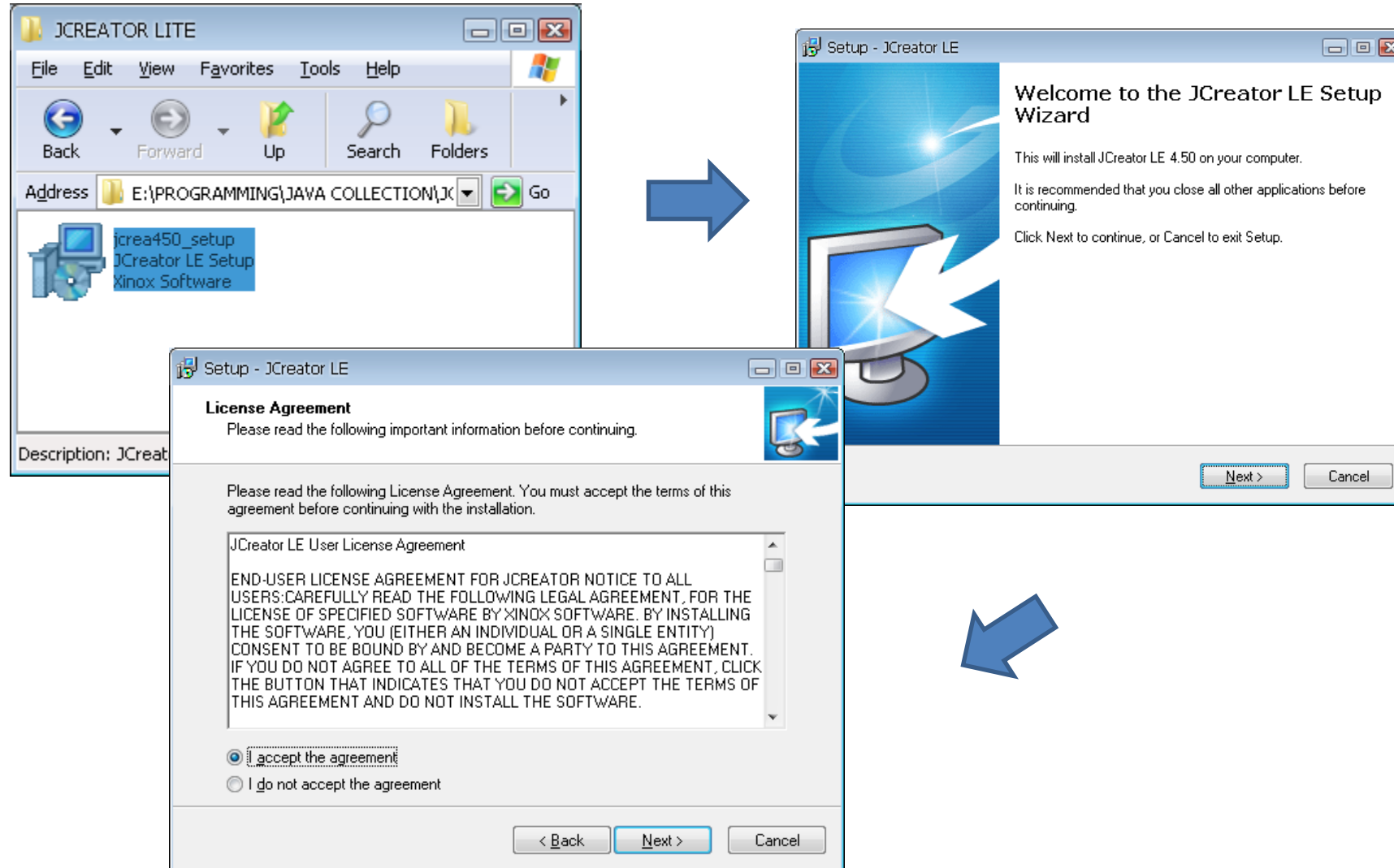
Memasang JDK



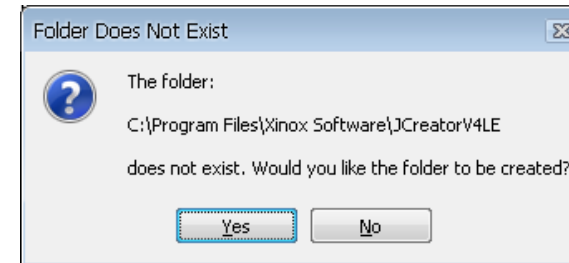
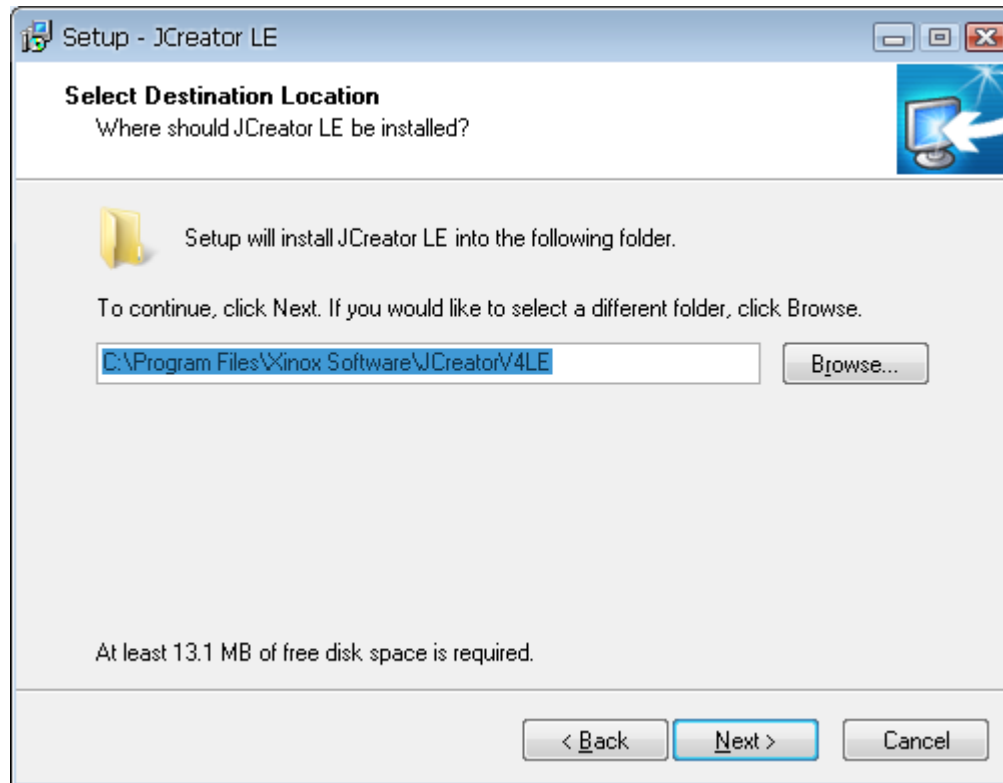
Memasang JDK (lanj.)



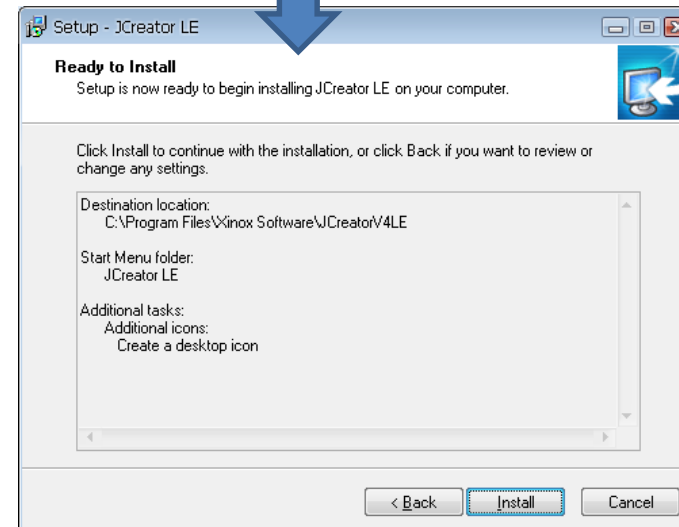
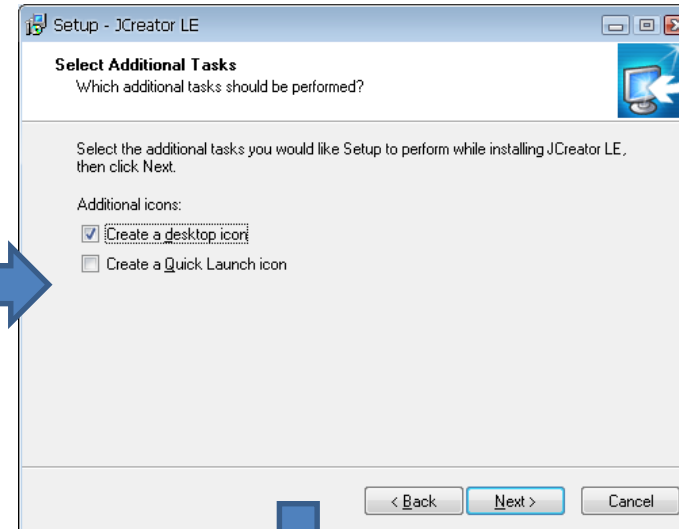
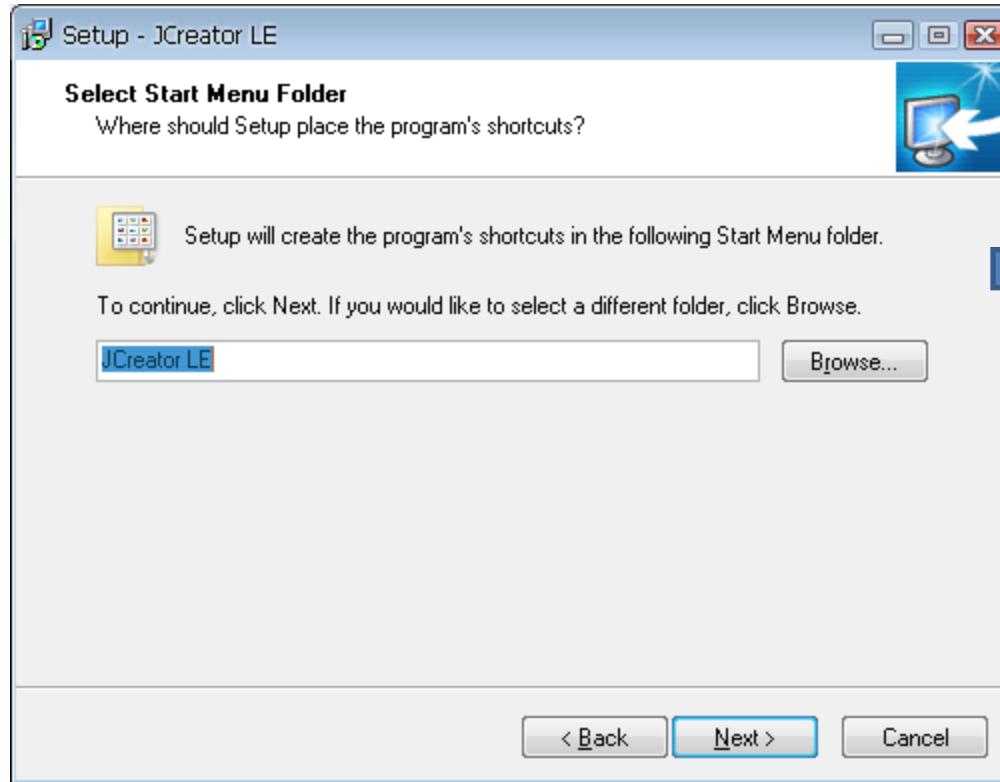
Memasang JCreator Lite



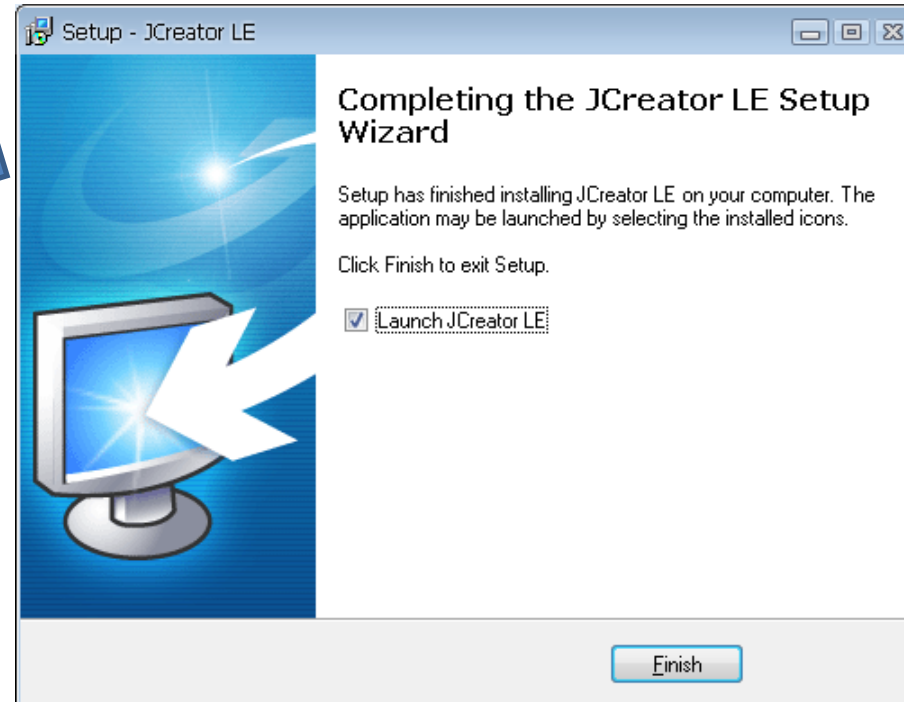
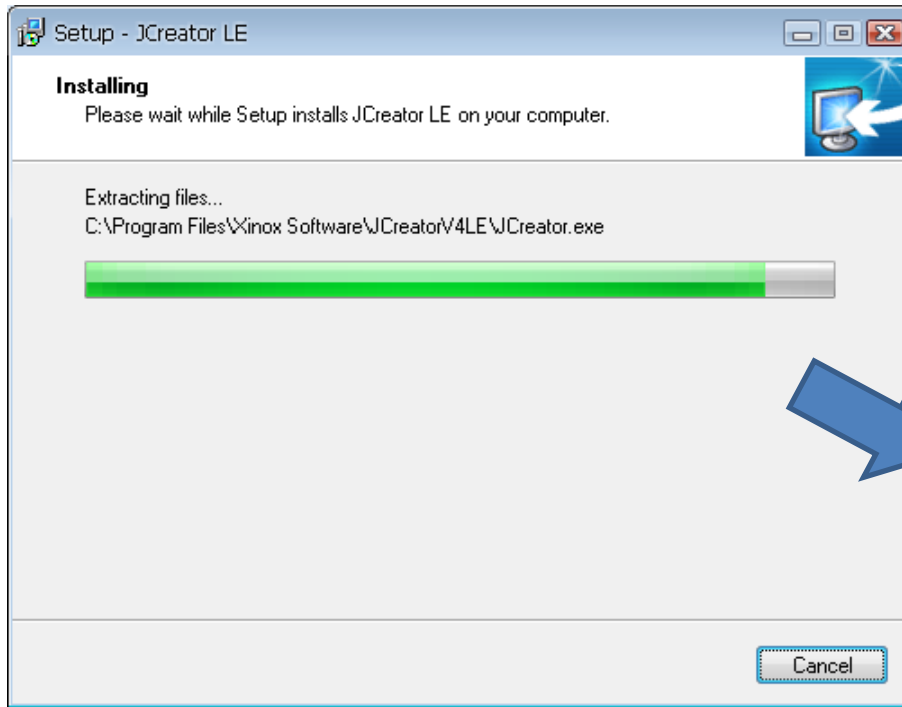
Memasang JCreator Lite (lanj.)



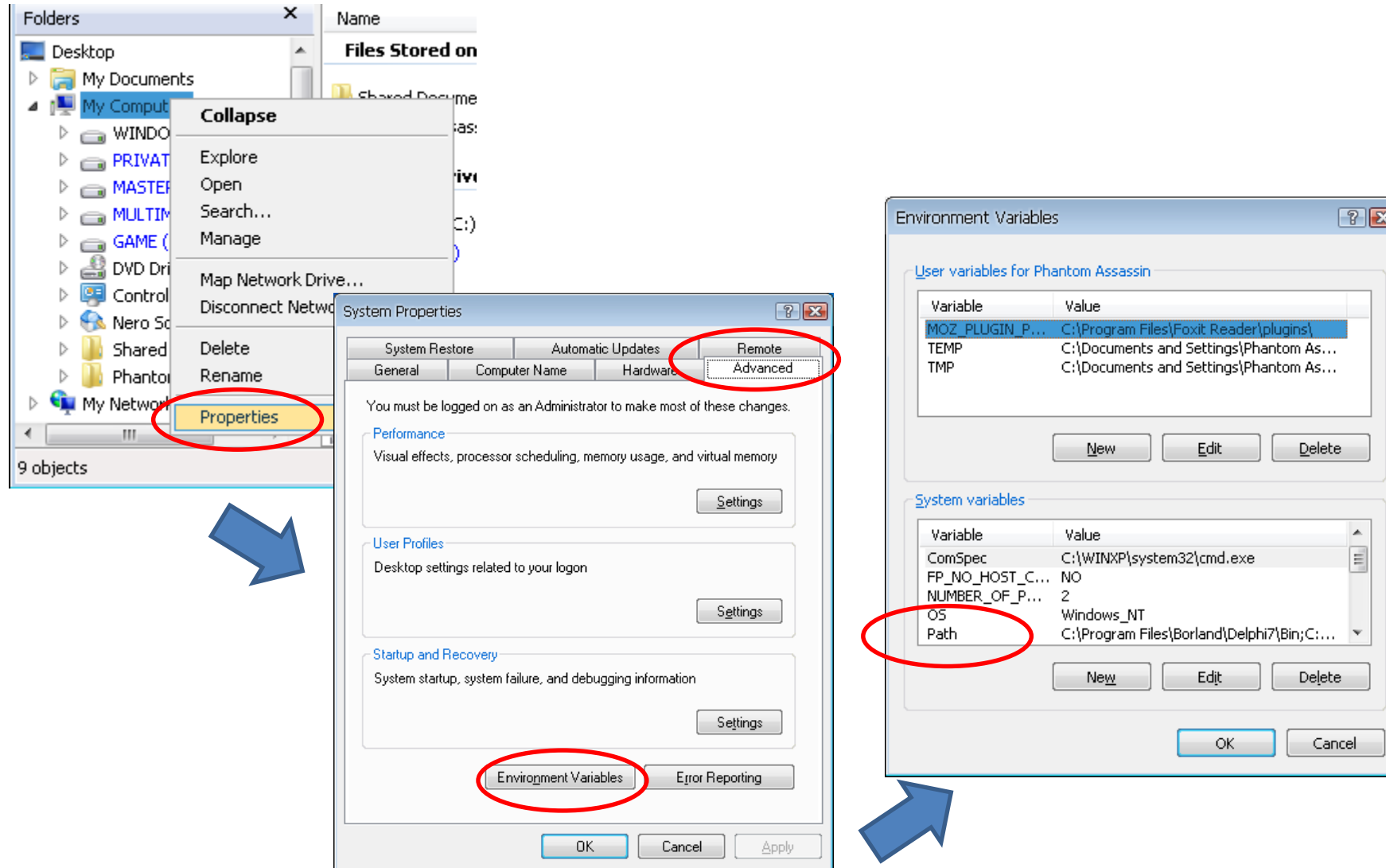
Memasang JCreator Lite (lanj.)



Memasang JCreator Lite (lanj.)

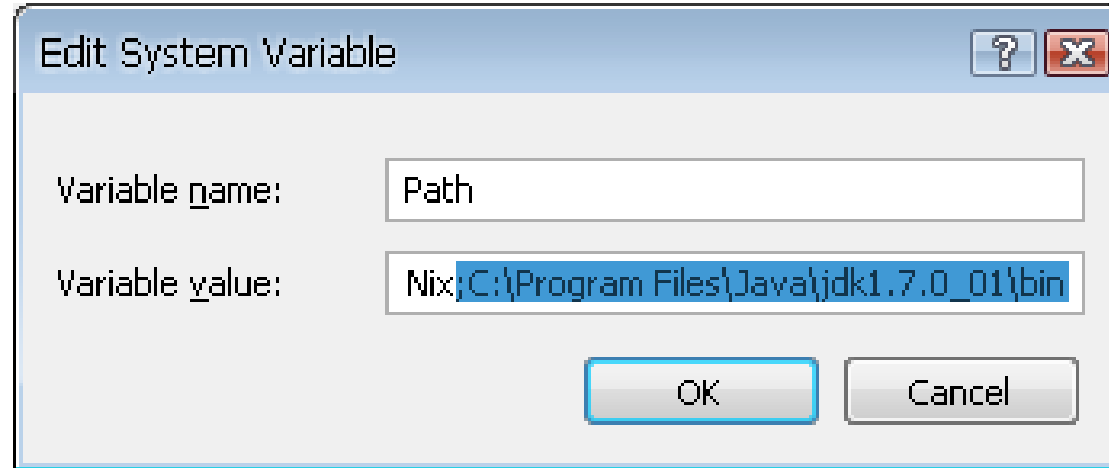


Ubah Settingan Path



Ubah Settingan Path (lanj.)

Tambah *variable*



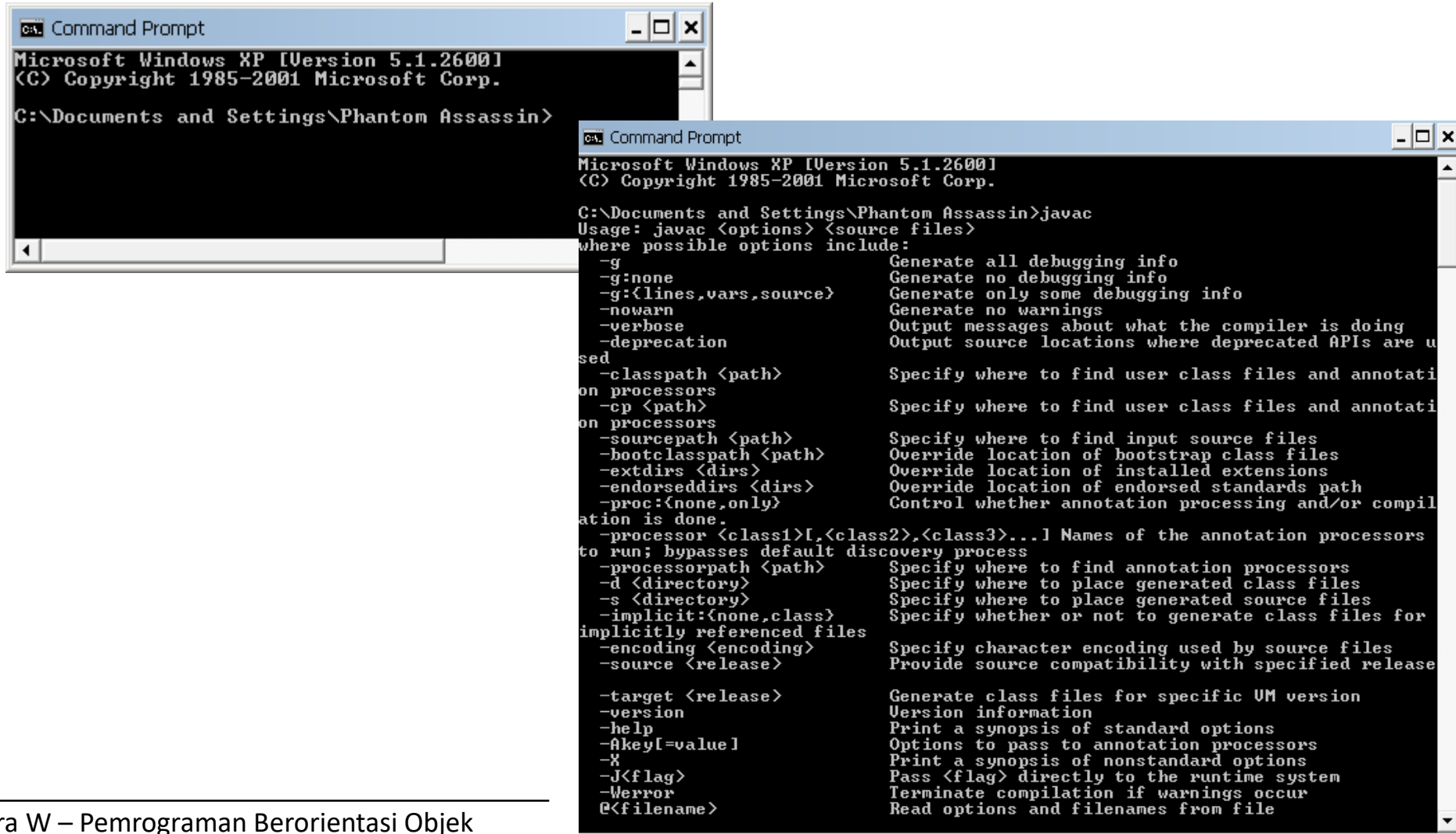
- 32-bit

→ ;C:\Program Files\Java\jdk1.7.0_01\bin

- 64-bit

→ ;C:\Program Files(x86)\Java\jdk1.7.0_01\bin

Ubah Settingan Path (lanj.)



```
ca. Command Prompt
Microsoft Windows XP [Version 5.1.2600]
(C) Copyright 1985-2001 Microsoft Corp.

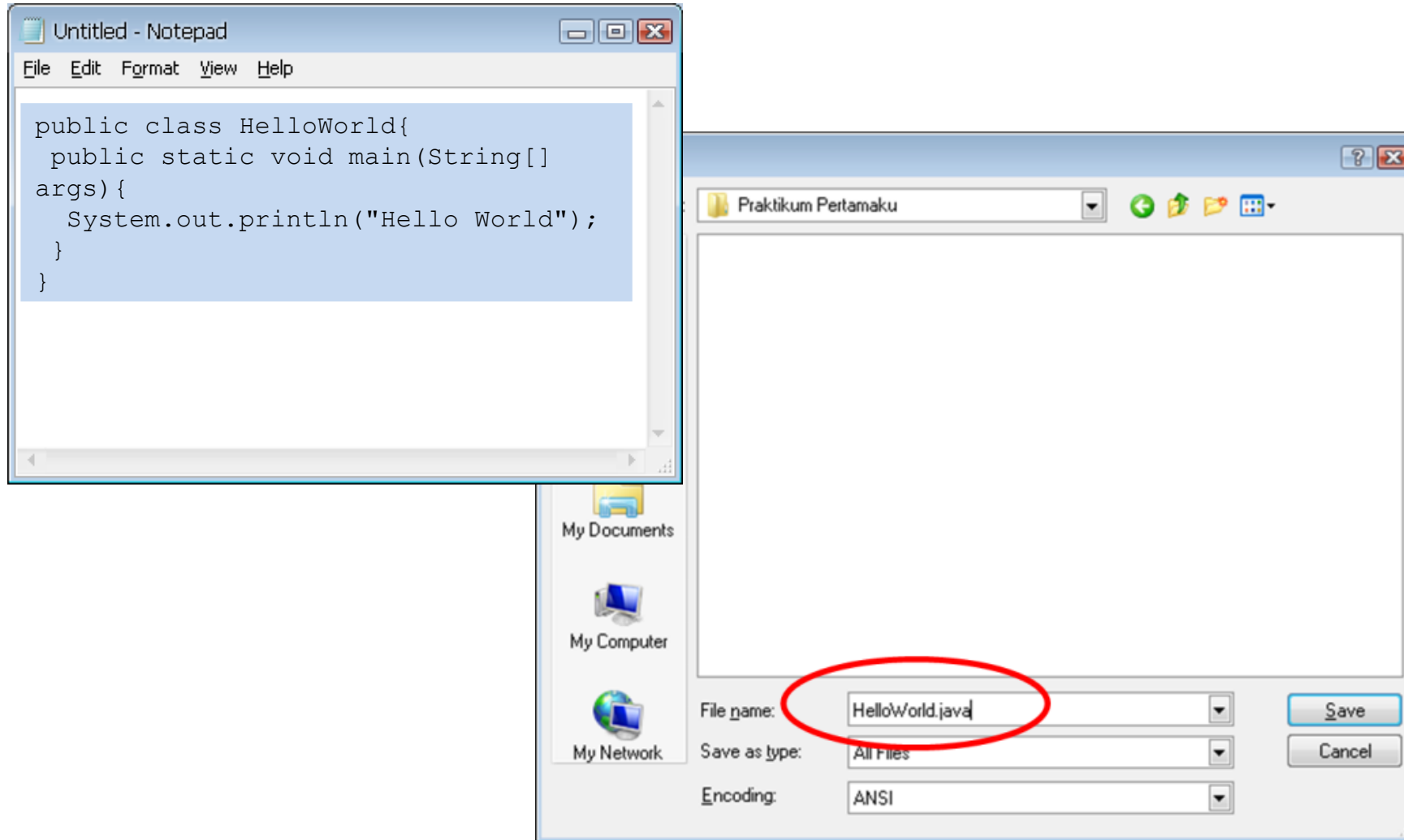
C:\Documents and Settings\Phantom Assassin>

ca. Command Prompt
Microsoft Windows XP [Version 5.1.2600]
(C) Copyright 1985-2001 Microsoft Corp.

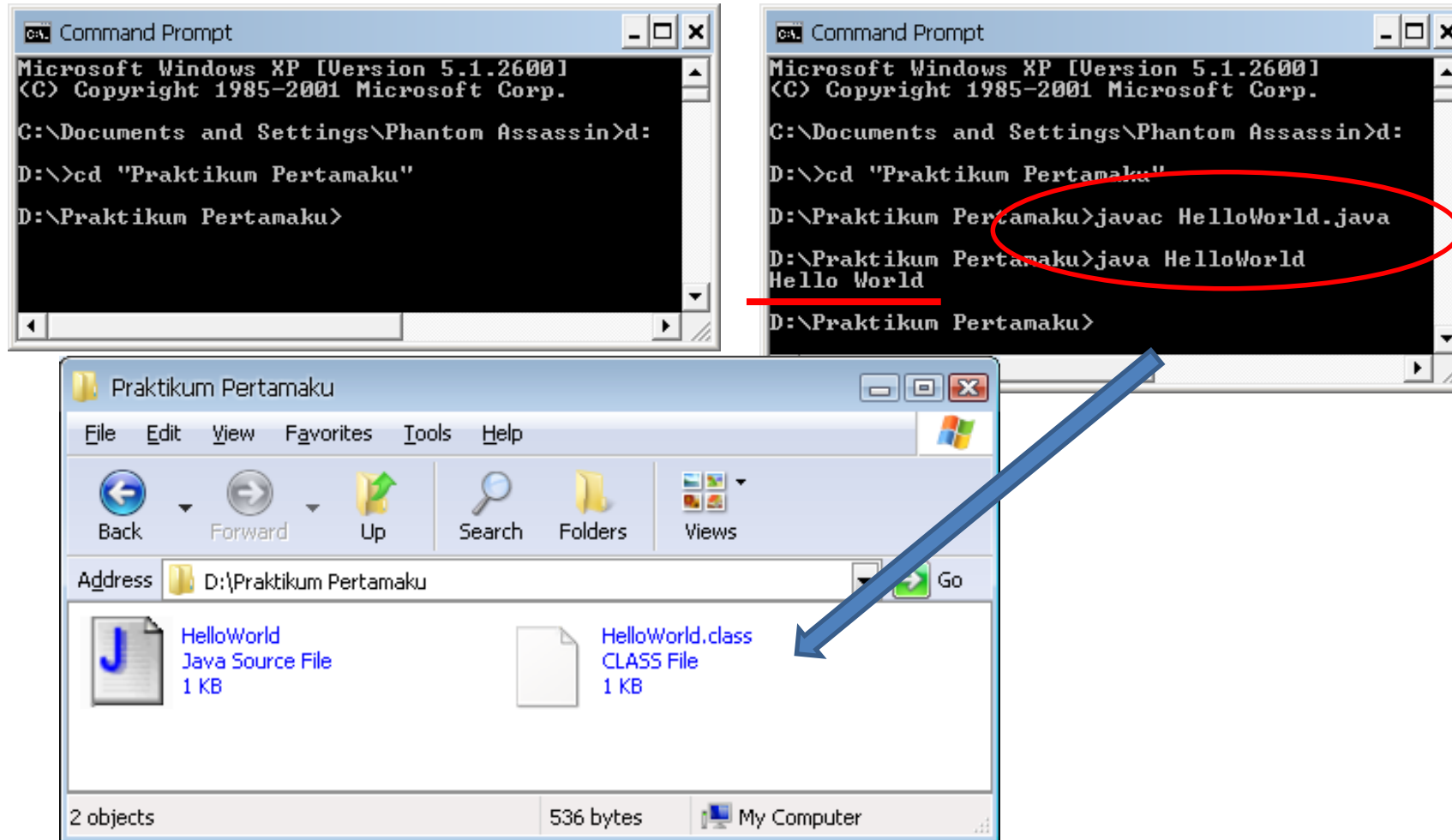
C:\Documents and Settings\Phantom Assassin>javac
Usage: javac <options> <source files>
where possible options include:
-g Generate all debugging info
-g:none Generate no debugging info
-g:<lines,vars,source> Generate only some debugging info
-nowarn Generate no warnings
-verbose Output messages about what the compiler is doing
-deprecation Output source locations where deprecated APIs are used
-classpath <path> Specify where to find user class files and annotation processors
-cp <path> Specify where to find user class files and annotation processors
-sourcepath <path> Specify where to find input source files
-bootclasspath <path> Override location of bootstrap class files
-extdirs <dirs> Override location of installed extensions
-endorseddirs <dirs> Override location of endorsed standards path
-processor:<none,only> Control whether annotation processing and/or compilation is done.
-processor <class1>[,<class2>,<class3>...] Names of the annotation processors to run; bypasses default discovery process
-processorpath <path> Specify where to find annotation processors
-d <directory> Specify where to place generated class files
-s <directory> Specify where to place generated source files
-implicit:<none,class> Specify whether or not to generate class files for implicitly referenced files
-encoding <encoding> Specify character encoding used by source files
-source <release> Provide source compatibility with specified release

-target <release> Generate class files for specific VM version
-version Version information
-help Print a synopsis of standard options
-Akey[=value] Options to pass to annotation processors
-X Print a synopsis of nonstandard options
-J<flag> Pass <flag> directly to the runtime system
-Werror Terminate compilation if warnings occur
@<filename> Read options and filenames from file
```

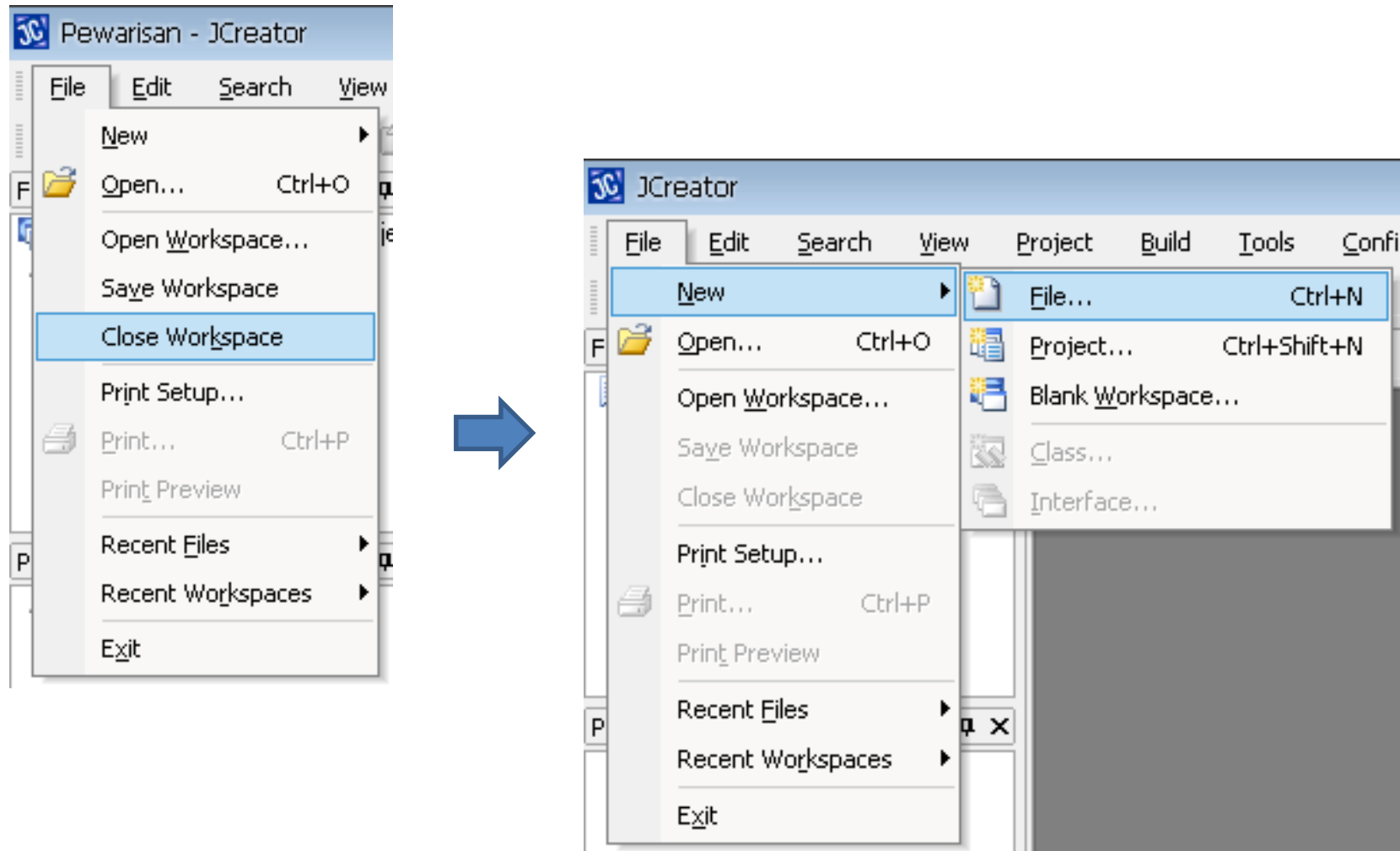
Program Java Pertama



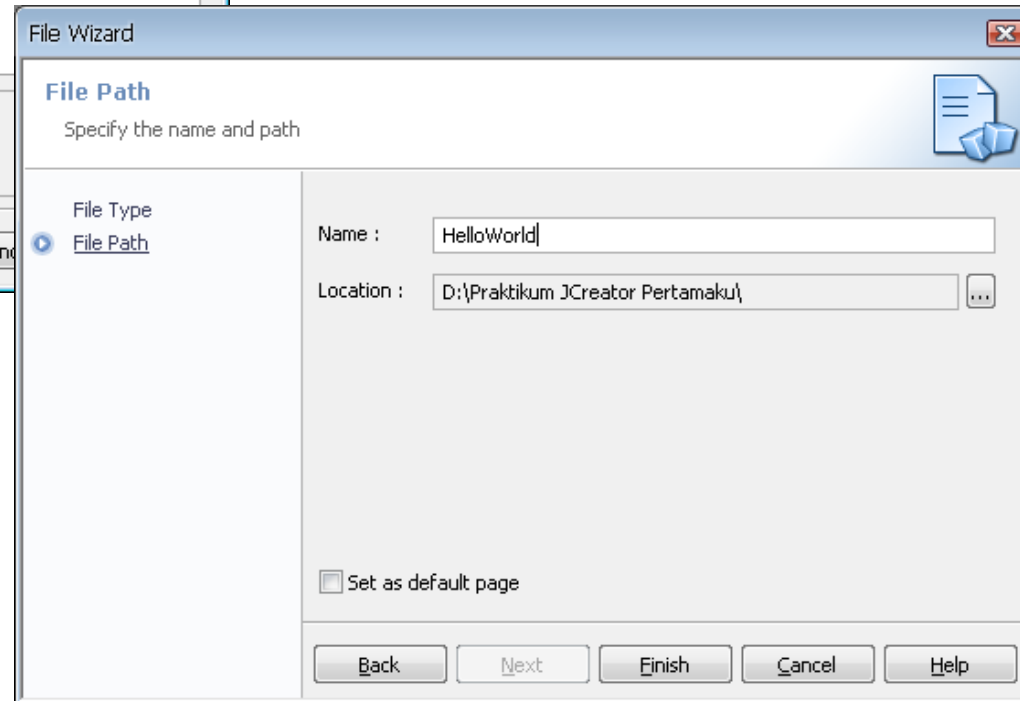
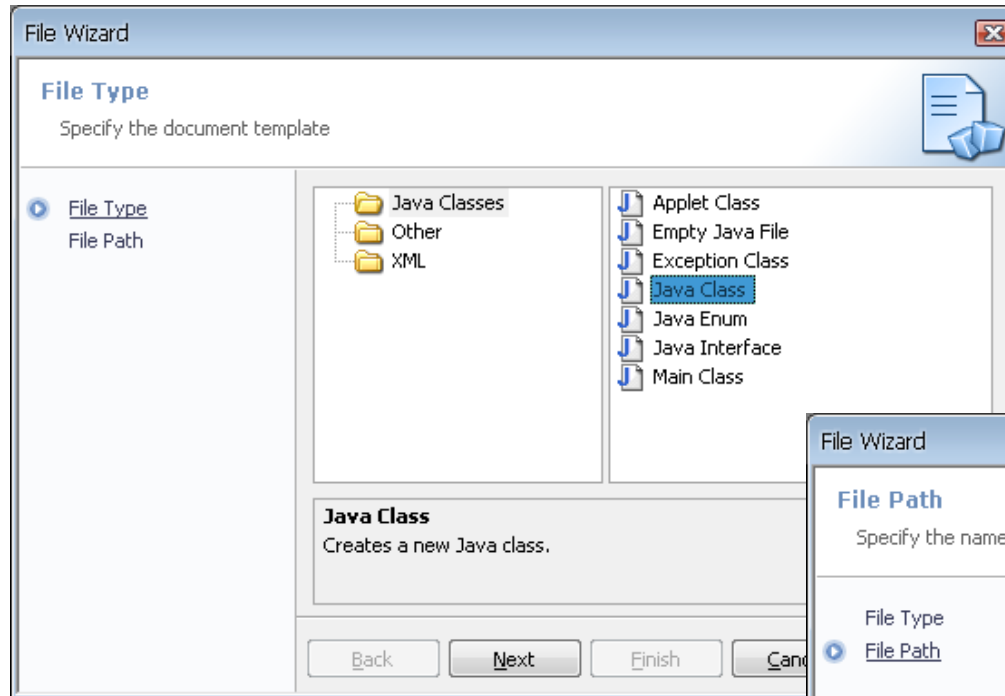
Program Java Pertama (lanj.)



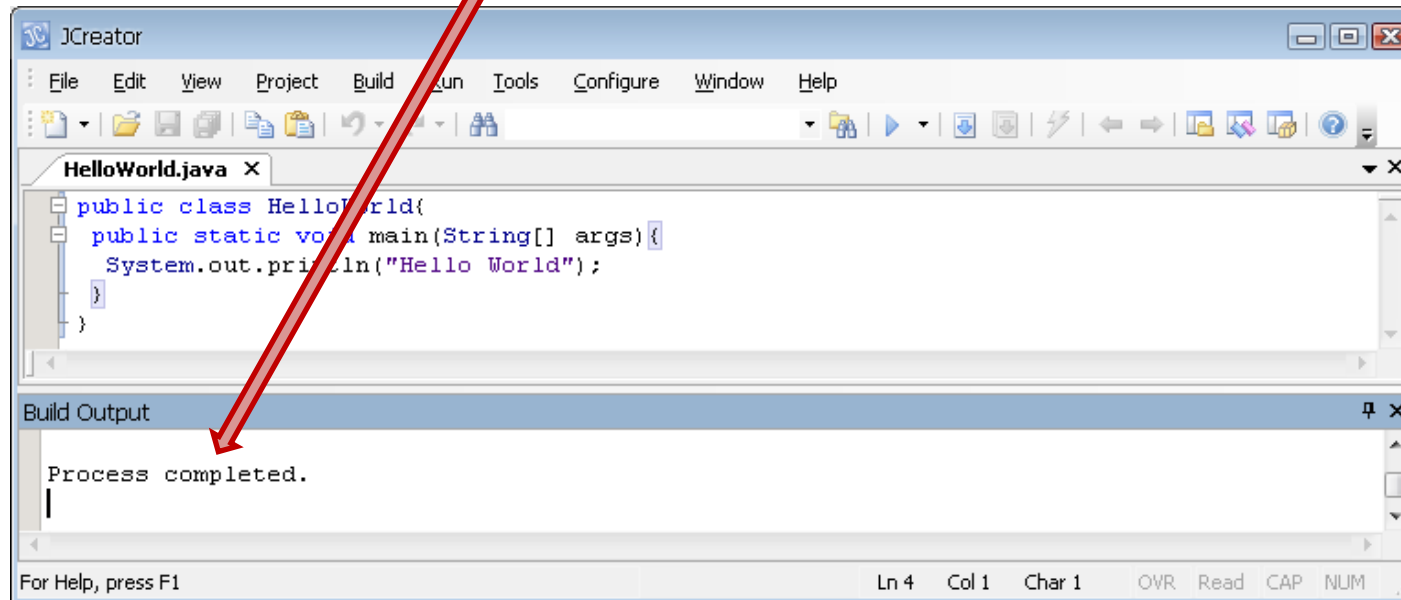
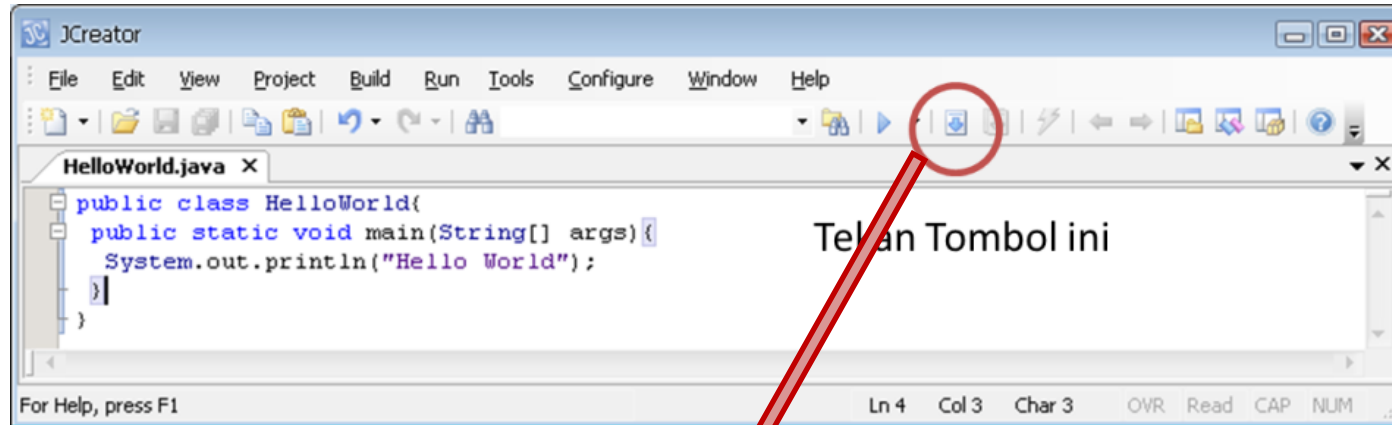
Java JCreator



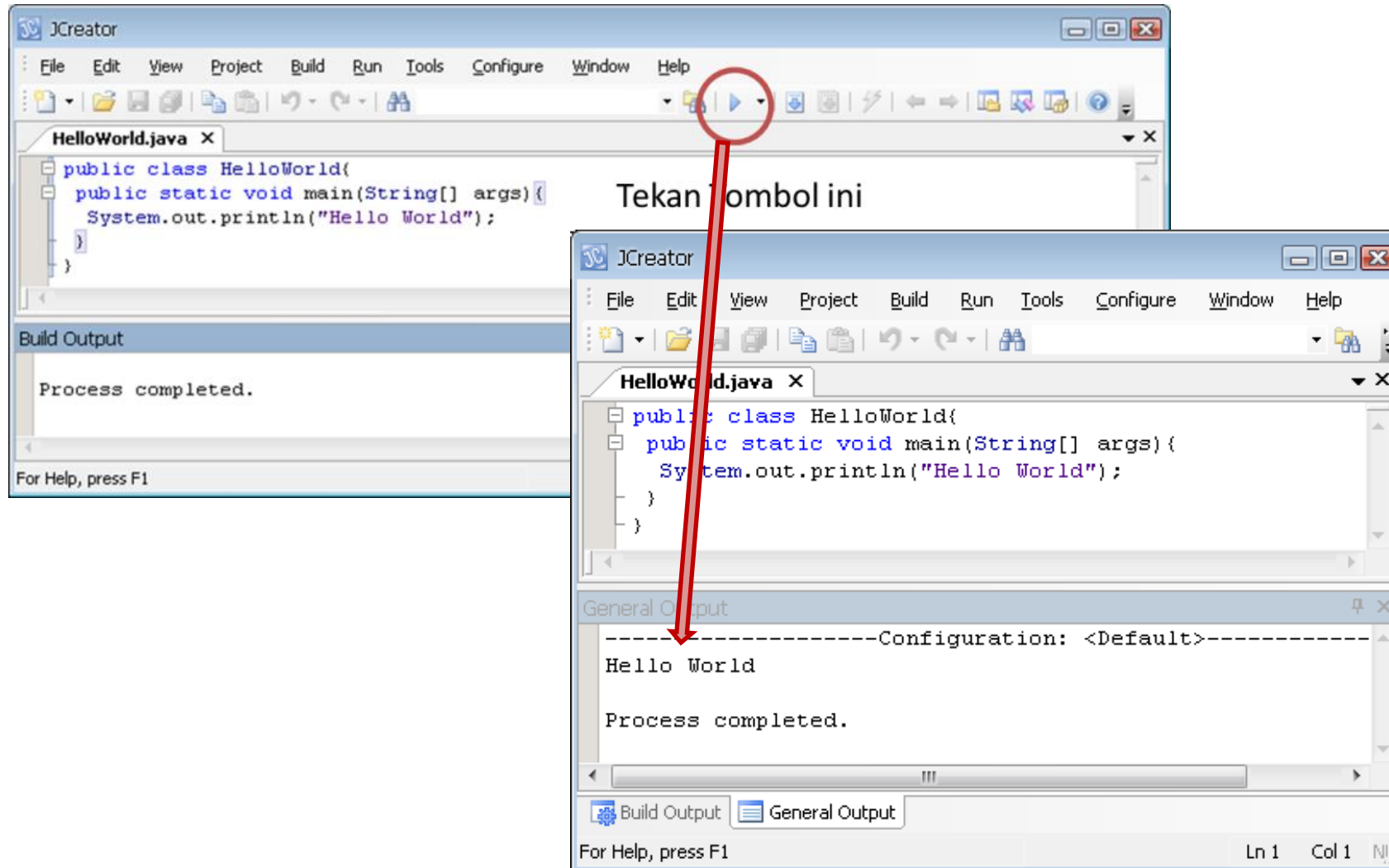
Java JCreator (lanj.)



Java JCreator (lanj.)



Java JCreator (lanj.)



Terima Kasih